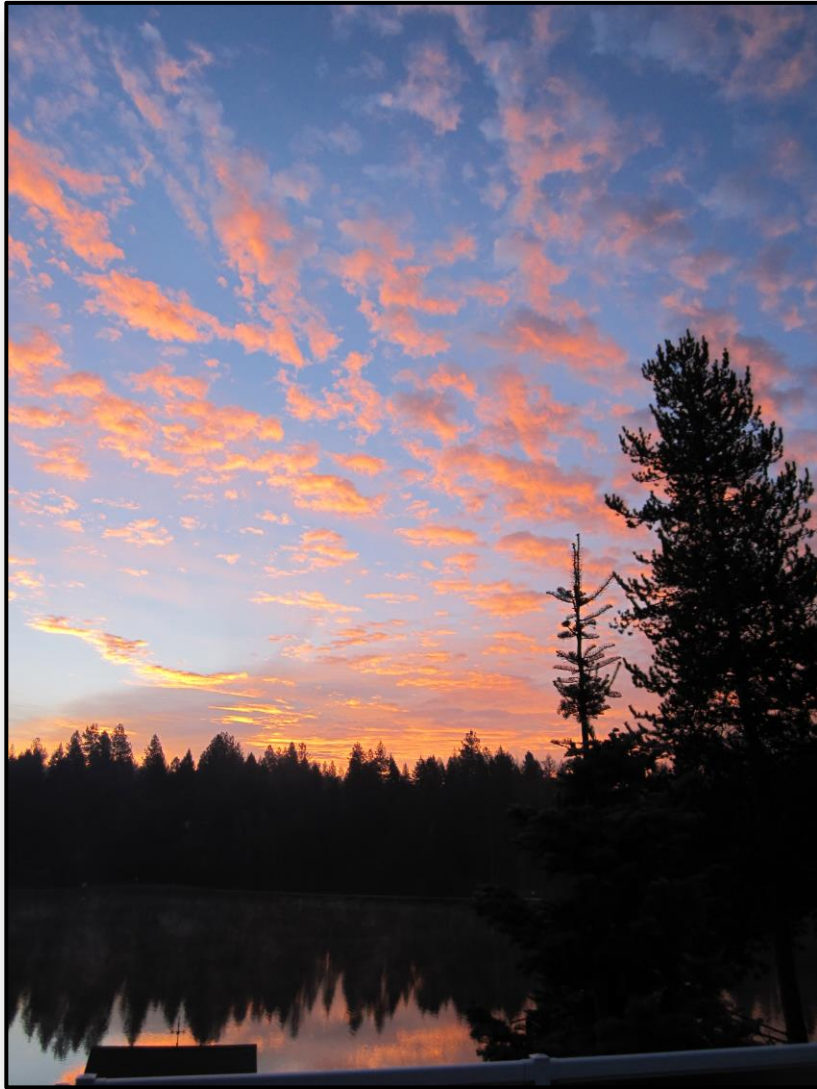


# Reflection Lake Community Association 1962 - 2012



*~ midsummer sunrise over the lake taken from Block 1 Lot 46 by Carl Hockhalter.~*

## *Lake History Project*

*Things have changed since the day Chet Sheets said, "Give one long and one short toot on your horn, so I will know you are authorized to be on the lake." Minutes 08/15/1962*

# *Upon Reflection*

*Reflection Lake Community Association's Fiftieth  
Year*

*1962 - 2012*

*by*

*Jerry Parker Chair, Nan Bulish, Phyllis Ells, Susan Weeks, Lucinda Wiser  
Lake History Project Committee*

*Supported by the Reflection Lake Community Association  
Printed by Wahluke High School Copy Shop. Mattawa, Washington.*

*March 2012*

# *Dedication*

*This lake history is dedicated to the*  
**hundreds of volunteers** *that worked for fifty years to improve*  
*Reflection Lake and the community*



*Photograph shared by Edith and Harold VanDerLinde*

## *Thank You*

*The Lake History Committee expresses its appreciation for the support of numerous community members that have contributed their time, knowledge, stories and photography.*



## Contributors

Russell Bishop

Joyce and John Boone

Joyce and Jim Boothby

Nan and Mike Bulish

Melodie and Craig Dowdy

Phyllis and Glenn Ells

Nadine and Gordon Emry

Sue and Brian Emry

Sharon and John Fechner

Luitgrand and Al Griffin

Sandi and Carl Hockhalter

Connie and Neal Kimbell

Linda and Dan Loos

Susan and Christopher Nash

Nancy and Lee Osborne

Maureen and Hugh Polensky

Jean and Pat Rickey

Debbie and Dale Ronquille

Anita and Rick Smith

Carla, Jeff and Jon Svennungsen

Joyce and Larry Toner

Kathy and David Vander Meer

Edith and Harold VanDerLine

Susan and Ben Weeks

Mark and Kate Wiser

Lucinda Wiser and Jerry Parker

Margaret and Dan Zoesch

Julie and Terry Zoesch



# *Our Fiftieth Year*

*July 2012*



*Gordon Emry photographed his Model A Ford and the oldest house in the community in 1981.  
This Ford still runs and now resides in Mead, WA.*

## Contents

	Page
Introduction	1
Timeline	3
Section I. Interviews	5
Section II. Lake: People, Places and Projects	27
Section III. What the Minutes Tell Us	71





*Fall wildflower growing on north dam. October 2011*



*Lake bottom puzzle-mud capturing tracks of lake critters. October 2011*



## Introduction

While reviewing Reflection Lake Community Association (RLCA) minutes, a board member noted that our community would be celebrating its fiftieth year in July of 2012. In 2010 the RLCA board of directors approved the formation of a Lake History Committee to study the Association's history and plan a celebration. The committee's goal was to publish a booklet of Association's development and celebrate our community.

The story of the Reflection Lake community is largely a story of one success after another, with some mishaps. John Pring platted the west side of the lake, called the Reflection Lake Addition into three blocks with 100 lots in 1957. During the 1950's, a fishing club was established called the Pelican Club, which apparently wasn't successful. The first Association meeting was July 18, 1962, and the development of the community became the responsibility of the Reflection Lake Association, which was composed of a few lot owners and 13 covenants. In the early days of the community, it seemed like they had one work party after another to improve the dams, roads, hatchery, access lots and create a community.

In 1967, the east side of the lake was platted into five blocks with 92 lots, which is called the Reflection Lake First Addition. All of the land on the East side was for sale in 1977 for \$150,00. A real estate developer bought it and formed a second association. In 1979 the two associations merged to form one association called Reflection Lake Community Association. The Lake History Committee has

spent much of 2010 making trips to the Spokane City Library, Gonzaga University Bing Crosby archive, Elk Sentinel, Spokane County offices and interviewing long-time residents. We have also asked members of the Association to share their pictures of the lake, and we have published many of the pictures in this booklet. Our goal was to discover and honor those who have made this community what it is today. The only certain thing seems to be that it will continue to grow and change with the help of our volunteers.

By Jerry Parker  
February 9, 2012



*Lake History Committee: Lucinda Wiser, Nan Bulish, Phyllis Ells,  
Susan Weeks and Jerry Parker*

*Photo taken by Mike Bulish on December 20, 2011*



# Reflection Lake

## Timeline

1955	Building of lake and hatchery, Pelican Club (fishing club)
1957	Reflection Lake addition was platted (west side) John Pring
1962	First association meeting held by Main Realty
1965	A book of rules will be drawn up
1966	78 lots ready for sale
1967	Plat Reflection Lake first addition (eastside), John Pring
1968	\$10.00 per lot assessment approved
1971	Chet Sheets passed away
1972	Lakeside Drive was chip sealed by Spokane County
1973	Mail delivery on the lake
1974	\$35.00 per lot assessment approved
1975	Eastside water system approved by county health
1977	All the land on eastside for sale for \$150,000
1978	Articles of Incorporation, nonprofit status
1979	Army Corp of Engineers report of dam safety
1979	East and west sides become one association
1983	Lake Assessment Study, Dr. W.T. Barry, professor
1984	Owner dues \$75.00 per lot
1986	Lake looks good this year
1988	Bids for spillway project
1989	Ernie Bleach Memorial Dam plaque will be installed on spillway
1992	Dues is \$100.00 per lot
1994	South dike complete. 1000 grass carp planted
1995	Sheets Road was graveled
1996	1000 grass carp planted. Lot dues increased to \$175
1997	Bald Eagle Beach built from hillside
1998	Mailbox installed on Sheets Road
1999	Spring application of herbicide (Sonar) by Dave Lamb
2000	Start of five lease lots to protect springs. Lot dues \$150
2001	By-Laws revision completed
2002	Purchased Community Center, \$14,000
2003	Lake roads chip sealed, second coat on 2004
2004	Sunshade built at Bald Eagle Beach. By laws updated
2005	Access Lot 15 was dedicated Bishop Park
2006	Community approved updated covenants
2008	Removed trickle tube north dike
2009	Mechanical fish screens for both outlets installed
2010	A lake history project was initiated.
2011	NE access named Turtle Haven at the annual meeting
2011	North dam cement reinforcement of overflow
2012	Our Fiftieth Year Picnic Celebration, July 14





*View of Reflection Lake from lower Sheets Road in 1993*



*Taken May 6, 2008 at 5:00 p.m. from south end of lake.*

## Section I. Interviews *(alphabetical)*

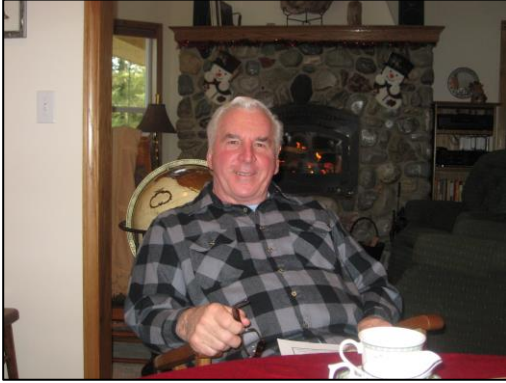
Joyce and Jim Boothby	6
Nadine and Gordon Emry	8
Lutgrand and Al Griffin	10
Sand and Carl Hockhalter	12
Pat Rickey	14
Carla, Jeff and Jon Svennungsen	16
Joyce Toner	18
Edith and Harold VanDerLinde	20
Kate and Mark Wiser	22
Terry Zoesch	24



*Photograph by Connie Kimbell, December 2008*



## Joyce and Jim Boothby



Joyce and Jim moved to the lake in 1980 with their children Kathleen and Jimmy. Jim served as a Chief Warrant Officer in the United States Navy and retired. Joyce met Jim when she was in the Air Force. She has since been a homemaker.

The realtor that sold them their home in Block 1 said that it was the second oldest house on the lake. In 1980 there were only a handful of people on the lake and only a few families had school age children. Glen Harrington, a banker and one of the original Reflection Lake developers,

owned the house next door, which is the oldest house on the west side. Dale and Debbie Ronquile now own that house and have done a big remodel.

Joyce and Jim both have served on the RLCA board. Joyce served for three years, and Jim for twelve. Jim was first elected to the board in 1984 and served as a board officer for all those years. He helped the Association develop a budget planning process and headed the budget committee for eight years.

Jim also worked on the signs, roads and fences. In 1985 he put in 38 signs including the information boards for lot owners and guests. He headed up a project to survey many uncertain property lines around the lake pertaining to the Association's property, which included access lots, green belts and right-a-ways.

Jim was responsible for the bids and contracts to have the chip seal applied to the lake's private roads. Much of Sheets Road has been torn up with heavy equipment that traveled this road. We had a ten-year guarantee on the chip seal if the third coat had been applied, but the board said the road looked good, so it was not approved.

Both Joyce and Jim spoke highly of Pat Rickey and his effort to get the spillway built on the south dam. This was a lengthy process because a lot of permits were required and core testing was required. Pat donated many hours, his own equipment, and employees from his business to move this project forward. Pat is really the one who got this project completed and helped to preserve the lake.

Jim said, "Another person that was a tireless worker for the community is Carl Hockhalter. He is great at seeing what needs to get done and follows through."

Jim worked to help acquire the Community Center and consolidate the Association's records, which has greatly aided this lake history project.

The Boothby's have a deep knowledge of the community and have given their time and talents to improve the lake and community.



*Joyce and Jim Boothby received the RLCA Community Service Award in 2011*



Wide-angle view of Reflection Lake taken from south dam.



Joyce Boothby with their beloved dogs on the dock at Bald Eagle Beach.



Boothby home is center and the house to the right was built in the early 1960s.



View from north dam with Joyce and dogs



## Nadine and Gordon Emry

Gordon and Nadine Emry discovered Reflection Lake in 1967 when a neighbor asked them to visit his weekender on the west side of the lake. We thought it was nice.

When they move to Reflection Lake 1979 there were three houses on the east side: the old farm house (Bud Emry's home), Jay Lucas's house two doors down to the north and a little grey house that sits back where Quaschnick lives now.



Gordon did the finish work on the house, such as, the trim work, wainscoting and the fireplace. When they moved in they had just a fireplace to warm themselves and they had to sleep in front of the fire.

Gordon thinks that one of the best things that happened was the chip seal on the lake's private roads.

They noted that Carl Hockhalter and Jim Boothby both have worked very hard to make this a beautiful lake.



Nadine and Gordon have a yard that is full of beautiful flowers every summer



Gordon has belonged to the Orchid Society for many years. He has a heated greenhouse where many varieties of orchids thrive. Gordon also rebuilds antique radios.



*Laelia purpurata* is one of Gordon's many species.

*Photographs provide by Gordon and Nadine Emry*



Nadine and Gordon Emry



Nadine and Gordon celebrated their Sixtieth Wedding Anniversary on August 2, 2010



Cindy Emry, Nadine Emry, Gordon Emry, Granddaughter Beth Emry and Angela, Daughter-in-law Sue Emry. Note the empty space east of Sheets Road in 1978.



Granddaughters Angie Emry, granddaughter Alicia Emry and Adam Eckley. Mid 1980s

## Luitgrard and Al Griffin



Al and Luitgrard now live in Deer Park in the warm season and Arizona in the colder months. This photograph was taken in the beautiful landscaped back yard in Deer Park, July 2011.

Al and Luitgrard Griffin moved to Reflection Lake full time in 1968. They bought their lot in 1964 and built one of the first stick-built homes on the lake. Al first learned about the area in 1948 when he was a bowling pinsetter for Chet Sheets.

Al saw the area that is now Reflection Lake in 1948 with Chet Sheets. This was well before the lake was built (See Chet Sheets page for more of this story). Al figured out a way to join the army when his was sixteen years old. Al served in Germany during the Berlin airlift. He reenlisted so he could stay in Germany and marry Luitgrard. He stayed in the army and retired.



*Their first house burned dow*



*They rebuilt in the same place.*



## Luitgrard and Al Griffin

Al told us about when the north dike washed out in 1969. The only way to get out of the west side of the lake was to go over the south dike. This was in the winter, and there was mud everywhere. Al said, "If it hadn't been for Larry Toner and his equipment, we would not have survived."



Al said that one of the biggest things that ever happened to make Reflection Lake a community was the paving of Lakeside Drive. Once the county took it over and paved Lakeside Drive, it meant that we could get U.S. mail service, school bus service and garbage pick-up. Then, people started moving out to the lake.

*The Griffins took great pride in their yard.*

Al Griffin and Alex Bishop, who lived on the south side of the access lot, worked together to develop Access Lot 15. They put in sprinkler systems and planted and mowed the lawn for many years. Today, Lot 15 is called Bishop Park.



Al and Luitgrard operated Al's Restaurant on Highway 2 for many years. They had a German theme and served many German dishes. They had a band that really brought the people in. Luitgrard made a chicken costume and when the moment was right, she would come out and do the chicken dance and the place would go wild.

## Sandi and Carl Hockhalter

Sandi learned about Reflection Lake through family and friends and fell in love with the areas. Sandi first owned a lot on Reflection Lake in 1966. Sandi and Carl bought an additional lot in Block 2 in 1977

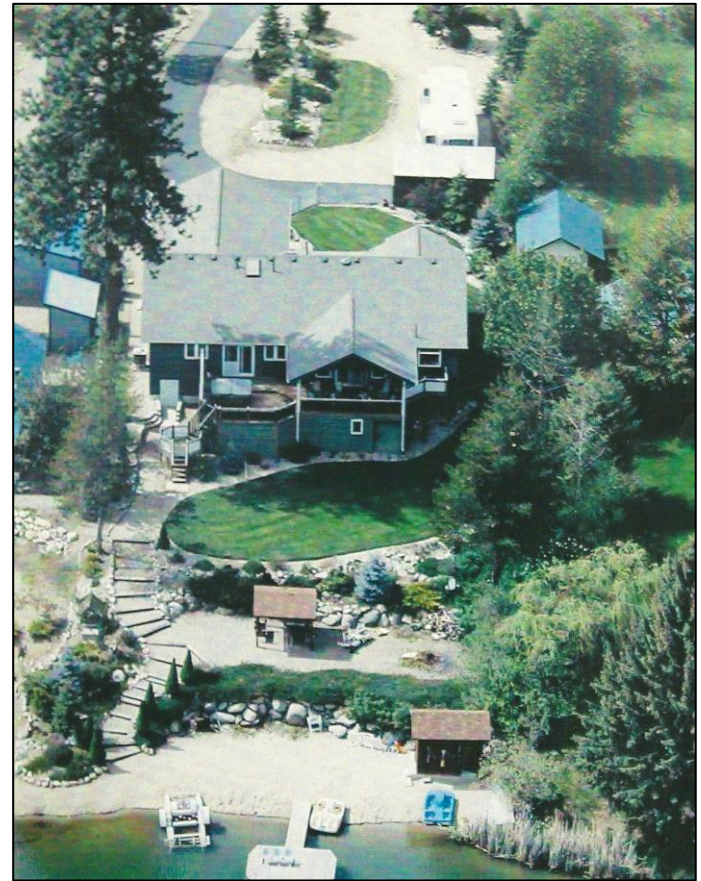


*Sandi, Carl and Elayna. Dec. 30, 2011*

They bought their Block 1 Lot 46 property in 1991 and put in a manufactured home in 1993. They built their current home in 1997. At that time Carl was Operation Manager for District 81 in Spokane, while Sandi worked as a beautician.

Carl began volunteering and serving on the RLCA Board long before he and Sandi moved to the lake full time.

In 1985, Reflection Lake began the South Dam Improvement Project in response to the Army Corps of Engineers report. There were really two projects: the flume and the big spillway. The



*Aerial view of the Hockhalter home 2011*

flume used to be just a pipe, but now it is concrete with a mechanical screen.

According to Carl, we didn't have the \$120,000 to fund the emergency spillway project. If the spillway was not engineered and built, the State was going to shut us down and eliminate the lake. We asked the owners on the lake to pay their dues two years ahead with the understanding that they would receive a third year free. At that time the dues were \$75.00. The Association community really came through and we had enough money to finish the spillway. Even with the \$120,000 we still had Pat Rickey and his men and equipment putting in many volunteer hours. Larry Toner volunteered himself and his backhoe, as well as many community members. Without volunteers we could not have afforded this project.



*This is Sandi and Carl's manufactured home in the early 1990s.*



## Sandi and Carl Hockhalter



*Carl working the compactor*

Carl reported after hours and hours of compacting the bed for the spillway, it still failed the compaction test. We then brought in a bigger roller that Pat lifted out of a truck with his pump truck rig. We were happy when the compaction test passed and we contracted out the concrete work.

Carl along with friends, most of which did not live in the community, built the dock at Bing's Landing. They dug holes for 55 gallon barrels and filled them with concrete that

support the dock. In Carl's own words, "I can't remember where I scrounged the well casings for the support of the dock." This is a strong dock that will last a long time. Hockhalter and friends made it happen without spending a fortune.



*Sandi, Carl's and friends built the dock at Bing's Landing*

During his time on the board, which is over half of the history of the lake, Carl held every office: president, vice president, treasurer and secretary. He has been not only a member of many committees, but a leader. As head of the Dam Committee, he has held regular meetings, made budget requests and carried through with numerous projects to maintain the dam's safety and compliance with state standards. Carl has a close working relationship with the DNR's Office of Dam Safety in Olympia and kept us in compliance for years by maintaining the dams at a high level.

Carl and Sandi had very high praise for Helen Bowerman. They said she was the backbone of the lake for years and helped to motivate a positive atmosphere. Helen did the record keeping as well as the minutes and newsletters.

Sandi and Carl are moving to Deer Park in 2012, and we will miss them.



*Carl enjoying the 2010 Annual Meeting while wearing his lake T-shirt*

*Sandi and Carl Hockhalter received the RLCA Community Service Award in 2011*



## Pat Rickey

The Pat Rickey bought his property in 1971 and moved here with his family in 1973. He was President for the Reflection Lake Association for eleven years from 1976 and 1977 and again from 1986 to 1994.



to

Pat talked about the early history of the lake. He said that originally, in the early 1950's the land used to be a dairy and a buffalo farm. In the mid 1950's, Chet and Shirley Sheets bought the 200 hundred acres and wanted to make this a fishing lake. They lived in the "old farm house" now owned by Brian and Sue Emery.

John Pringe was a developer and realtor. He purchased part of the land on the east side of the lake. He tried to sell the east side and the lake bottom to the west side of the lake around 1979. After much talking and sometimes heated debates, it was agreed that the Associations on the east side and the west side of the lake would join to make one Association. Pat was the president during this time, working with Pringe and Hadley to make this deal.

The Bing Crosby's association with the lake was established because Bing Crosby was a friend with Pringe and he used to come here to fish. They would stay in the hunting cabin, (now Brian and Sue Emery's house). Pat tells of floatplanes, which could have been Crosby, landing by the fish hatchery for a day of fishing.

Pat talked about the tench (unwanted trash fish), were introduced into the lake. This happen in the early years when Chet Sheets was getting the fish hatchery started. In one of his concrete basins he would raise and keep tench as food for the trout and bass that were being raised. One day the concrete basin broke lose and the tench were washed into the lake. Fifty years later, they are still a problem.

*What is your favorite part of living on the Lake?* "I liked the peace and quiet. My kids also really enjoyed the water."

*How have things changed on the lake?* "The weeds used to be a real problem on the lake. We had many work parties to try and bring in the weeds. It was so bad you could almost walk across the lake on weeds. At one point Larry Toner brought in his heavy equipment to haul away the weeds, that groups of us had raked-up across the lake and put on shore. It was a real problem for a lot of years. We poisoned the lake and that is what really took care of the weeds. We might have done too much because now we don't have enough weeds. You need to have about 15% weeds for a decent lake."

*Interview by Phyllis Ells and Lucinda Wiser, July 7, 2010  
Lake History Project*

## Pat Rickey

“Also, lots of people have come out here now. When Douglas built a bunch of homes out here in the late 1990’s, people really moved in here. A change has been that people seem to get along better now days. “

Pat Rickey put in many hours of work. The minutes reflect that there used to be a work party almost every weekend during the summer. Pat explained how the lake was built with volunteers. He volunteered his time and equipment, but shared that many people, including Larry Toner would put in lots of time and effort to create this lake. Work parties would be held to do the following:

- Pull stumps from the lake
- Pull weeds from the lake
- Work on Access lots
- Work on the dams

Pat’s biggest contribution to the lake was to raise the south dike 3 feet, widen the dike and put in the concrete spillway. This had to be done because the Washington State officials and the Federal officials said that we had to do this by a certain date. This work was done in the late 1980’s maybe around 1987.



*Pat’s home December 2009*

He also talked about how he and Larry Toner put in the tube on the north dam. That is the tube that was just taken out. It was there for 35 years and they did not charge the lake for any of the labor.



The memorial plaque to Ernie Bleich was put on the spillway because he had recently died in a traffic accident on Highway 2 near the Ram Burger. He had emigrated from Germany to Canada and traveled from Canada to Reflection Lake. He lived next door to Svennungsen (Block 1 Lot 24). He was an active member of the Association and helped with work on the dike.

Pat talked about turning Lakeside Drive over to the county. The county was very interested in taking over this road and the Association paid \$3,500 to the county. The county has since paved the road and continues to do snow removal.



## Svennungsen Family



Jon Svennungsen bought this home from an architect in 1973 and moved here with his family. Jon was an engineer and was a member of the Association board. Jon responded to the US Army Corp of Engineer Report in 1979 that threaten to drain the lake if the dams were not improved. He and his company were the consulting engineers who did much of the work to bring the dams up to Washington State safety standards. His son, Jeff Svennungsen and wife Carla bought this home in 1986 and still live on the lake.



Jeff is a second-generation lake person having moved to the lake when he was ten. Here in 1977 he is helping build the garage.



Jeff remembers many family hours of fun ice fishing, and snowmobile racing on the lake. He remembers he and the Rickey's would take a Jeep drive onto the lake and clear a racetrack.



Jeff, Joni, Mike Svennungsen with their home in the background in 1975.

*One family, four generations, one lake*



## Svennungsen Family

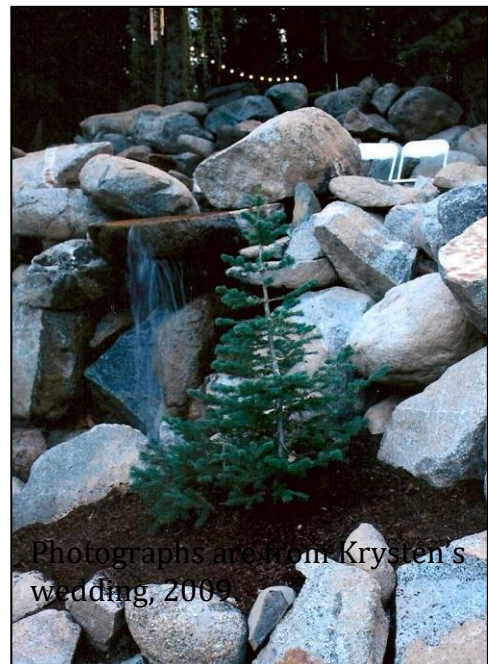


I would like to add how much our family has enjoyed the lake. Our girls Tyann, Jennifer, Krysten and Tessa have had such a great time growing up here. When the Toffers and Tolbins were next door it was just such a fantastic time. The Toffers were just like grandparents to the girls and Barb and Larry Tolbin were always there for us. Our girls would sing Christmas carols to them and were always visiting.

What we remember most is catching turtles from the old paddleboat, the one we still have to this day. The girls would load it with a picnic and nets and spend hours out catching turtles. Then, they would paint a letter on their bellies and let them "race" from the beach back into the lake. One year they caught a little turtle and put the letter "J" on his belly for Junior. They caught him the next year and the "J" was still there, but he was much bigger and was not a little Junior anymore.

We hope to call this place home for many years and now our grandchildren are enjoying the lake just like Jeff, Mike and Joni and our kids did. We feel very lucky to have this little piece of heaven that we call home here at Reflection Lake.

Carla Svennungsen, January 2012



Photographs are from Krysten's wedding, 2009.

## Joyce Toner

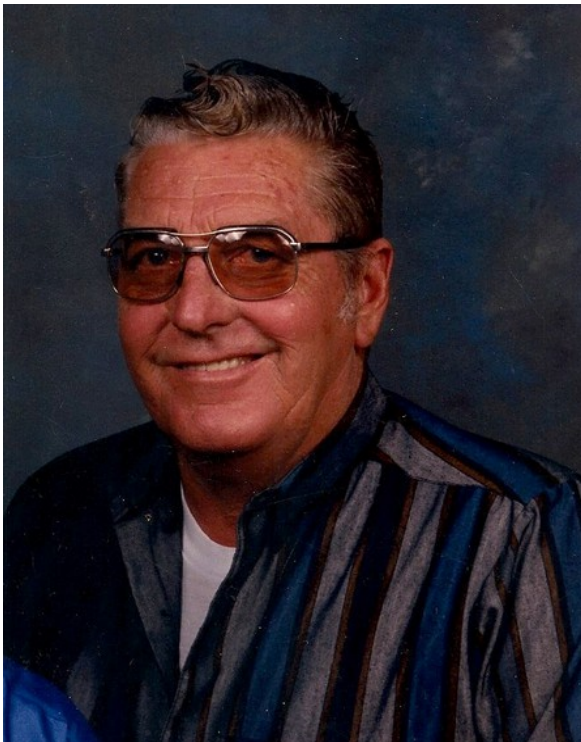
Joyce Toner was interviewed at her home on the lake, Block 1 Lot 44, on July 7, 2010. The Toner family was the second family to move on to the lake fulltime in the late 1950s. Joyce and Larry had three children, Randy, Kenny and Kathie and now have nine grandchildren plus great grandchildren.

Larry Toner was responsible for many of the building projects on the lake in the early years. Larry and his equipment built Lakeside Drive, which was completed in two parts. First, he put in the lower road in 1966 in exchange for partial payment on their lot. Later in 1968, Larry put in



*Joyce Toner, July 17, 2010*

the upper part of Lakeside Drive and made the road straight, the way it is today. Before this time, the road looped around. Initially the road was so narrow, that two cars could not pass each other. Joyce told a story of one car trying to pass her in the opposite direction and pushing her off the road. If it hadn't been for the big bush on the side of the road she would have gone into the wetlands on the north side of the north dam. When Larry Toner made the road straight he also widened the road by three feet. The payment for doing this work was a new 1968 Chevrolet.



*Larry Toner*

John Pringe and Glen Herrington were some developers of the Reflection Lake Association and they were the ones responsible for making this deal. John Pringe was partial owner in Appleway Motor Company and Glen Herrington was a Banker. One of the reasons that the



## Joyce Toner



Larry and Joyce Toner, 1995  
president was Bradley. Bradley lived where Rick Hayes lives now.

road was widened was because the old drainpipe broke and washed out part of the road on the north dike. The ice was to blame for the drain breakage.

Larry Toner's aunt and uncle Hugh and Geneva Toner won the A Frame in a drawing that was held in Spokane.

*What is your favorite part of living on the Lake?* My kids really enjoyed the water.

*How have things changed on the lake?:* Lots of people have come out here now.

Larry Toner was vice president in 1969 and served on the Association Board when the first



The Toner family celebrates 4<sup>th</sup> of July at the lake every year. Pictured here is the roasting of a pig one year.



Fun, games and food bring the family together at the lake

Photographs provided by Joyce Toner

Harold and Edith VanDerLinde



Harold (Van) and Edith VanDerLinde got their lake weekender in the late 1960s, and made full use of it for more than four decades. There were seven places on the lake at that time. Harold spent his career as a registered pharmacist. Edith is Joyce Boones aunt, who has enjoys the lake each summer.



Harold and Edith took advantage of the lake year round. They often celebrated on New Years Eve at the lake



There was one winter when we had our own ice rink. A couple of friends came out and worked almost all day clearing the snow off of the ice. What fun.



Edith and Harold VanDerLinde



Our grandson caught a good size bass, which was released.



This forest fire drop plane made a stop to takes on water in late 1970's



The little red house is our place viewed from the east side of the lake.



Van with dog clearing the ice of snow on a sunny winter day.



John and Joyce Boone with Edith in 1982



The bottom of the lake showing exposed pondweed and rocks.

Photographs provided by Edith and Harold VanDerLinde



## Mark and Kate Wiser



Mark and Kate Wiser moved to Block 1 Lot 13 in 1989. Tim William built this “A” frame by milling cedar logs from Mount Spokane as well as hand digging a well. At the time Mark and Kate bought this home, the lake was drained, and they kept saying, “Some day there will be a lake here.”



During the decade of the 1990 the pondweed growth in the lake was out of control. This photograph shows how much of the surface of the water was covered with aquatic weeds. Note the Bald Eagle flying low past the Wiser dock.



## Kate and Mark Wiser



Mark served on the RLCA Board for nine years: a board member, vice president and acting president. The projects he remembers most are working on lake water quality, planting the carp, assisting in completing the dam spillway, and installing the sign at the entrance to the lake.

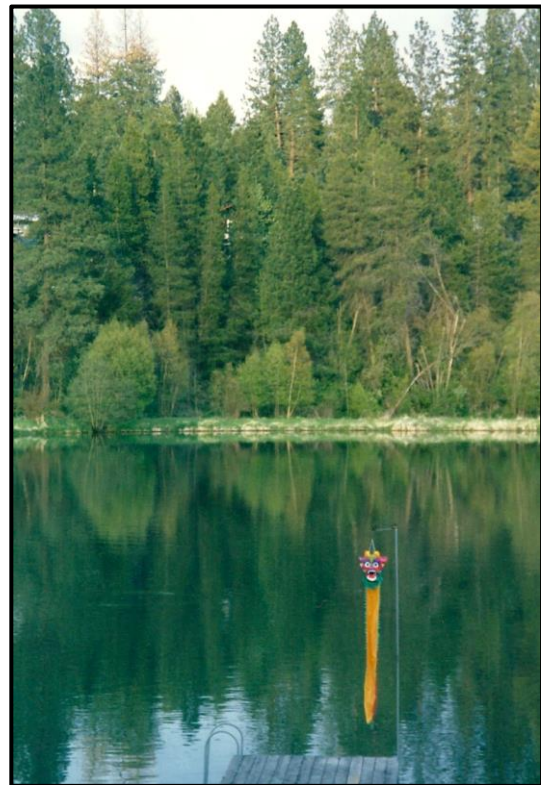


Newly planted aspen required protection from the lake's beavers.

*"Reflection Lake is a beautiful natural area where I have seen many incredible sights and I have been a part of a community that is equally special."*  
Mark Wiser (2012)



Kate served on the RLCA Board for three years as secretary. Her legal education; shorthand skills and especially her detailed minutes, have been a valuable source of historic information for the lake history project.



The Wiser's dock flew a different windsock every month.

Photographs provided by Kate and Mark Wiser

Kate and Mark Wiser



## Terry Zoesch and his familyz



*Jeannette and Allen Zoesch*

Allen and Jeannette Zoesch had nine children and became involved with the lake in 1958. The A frame across from Bishop Park was built by the developers, which served as a real estate office and became a prize that was raffled off at the Spokane Sportsman Show. Allen contacted the winner and purchased it for a family weekender for \$5,000. Terry remembers that that they built a loft for the kids to sleep.

Allen was the second president of the lake Association. He contacted the attorney and they came up with the set of bi-laws. This officially created the homeowners Association, called the Reflection Lake Association. Allen



also purchased several lots in Block 1 and developed Lots 6 and 7 using a surplus barrack from Geiger Airfield. Allen was an employee at Keizer and the family spent most of their summer months at the lake.

### Zoesch Siblings

Terry Zoesch/Julie (wife)  
Dan Zoesch/Margret (wife)  
Larry Zoesch/ Sherrie (wife)  
Sharon Zoesch/Steve Gump  
Jan Zoesch  
Kathy Zoesch/Glen Campbell  
Jim Zoesch/Beth (wife)  
Bill Zoesch  
Mary Zoesch/George Bayer



Photographs provide by Terry Zoesch

*There is not a house in sight. Photograph likely taken in the 1950s or 1960s.*

## Terry Zoesch and his family



*Terry Zoesch, 2012*

Terry remembers being on the lake in the summers, going over to the fish hatchery, and working on the cabin. Onetime, I was sick during the week and Dad took me to the cabin and we spent the night. I remember waking up to French toast in the morning. Being one out of nine kids meant it was special to spend one-on-one time with Dad=

Terry recalls Chet Sheets as being a typical senior Elk person. In the winters, Chet would not plow the south dike road, only the mid-lake dike. One time he caught me fishing in the hatchery pond and he yelled, "The Zoesch boys are at it again."

Three members of the Zoesch family have served as Association Board Presidents. Terry currently serves on the Association Board and was president in 2008. Larry Zoesch served on the board and was president in 1999 and 2000. Allen Zoesch was president in 1963.



*Terry and Julie's home, January 2012*

Between Allen, Dan, Larry and Terry they have owned many lots and homes in the Association. Terry bought his lots in 2000 and Julie bought in 2004. They were married and combine their property and have built a new home.



*This is Allen Zoesch and his five sons.*



*This is Terry's daughter Gretta in the golf cart next to Charlene's smart car.*





Kate Wiser captured these rainbows on June 27, 2001.



*What a spectacular Christmas display on Sheets Road by Jona Blake and Chris. Photograph was taken on December 25, 2011. Thank You Jona and Chris.*

## Section II. Lake: People, Places and Projects

The years before the lake	29
The Old Farm House	30
1948 Chet Sheets	31
1955 The Pelican Club, Spokane Daily, April 27, 1955	32
1955 Reflection Lake Fishing Club Site, April 24, 1955	33
1957 Bing Crosby	34
1962 Main Realty, Reflection Lake Advertisement	35
1962 Big Development Due at Reflection Lake, April 1, 1962	36
1979 Army Corp of Engineers Study, 1979	37
1981 Spokesman-Review, 28 Dams Unsafe	38
1981 Ernie Bleach Memorial Dam	39
1980s Jean Rickey's Scrapbook Pages	40
1992 The sign	45
1994-1996 Grass Carp	46
2001 Picnic Boat Race	47
2003 Dam Committee	48
2003 Trees of Frontage Road	49
2006 History Stump	50
2006 Bishop Park	51
2007 Fish Planting	52
2007 Bald Eagle Beach	53
2008-2009 Record Winter Snow	54
2009 Bing's Landing	55
2009 Carp Round Up	56
2009 Lake Study Site	57
2011 Turtle Haven	58
2011 Annual Lake Cleanup Day	59
Lake Wildlife	60
Lake People and Snapshots	65





*Condition of the Fish Hatchery in 2011*



*Built in 1955 and last used in the 1970s.*



## The Early Years Before Reflection Lake

In the 1880's – 1892 the Great Northern Railway built a line through this territory. In 1901 a small sawmill was started by Mr. Rice. In 1903 a company from the east called Edwards, and Bradford Lumber Co. bought out Mr. Rice. The mill was located in Elk where the Elk Store and the houses surrounding, now stand.

A railway spur was then built for logging trains going to and from the mill. The spur ran from the mill going behind Rick Hayes, across the front of Larry Toner and Pat Rickey's and on through the old Coldsnow place and up through the canyon (across from Coldsnows) to Dunn Road, eventually connecting to the railway line east of Chattaroy. The mill closed in 1931. However, some of the houses in Elk from the early years still remain.

### How Reflection Lake Began

Before Reflection Lake was built the lake bottom was a buffalo farm, owned by a Mr. Richardson.

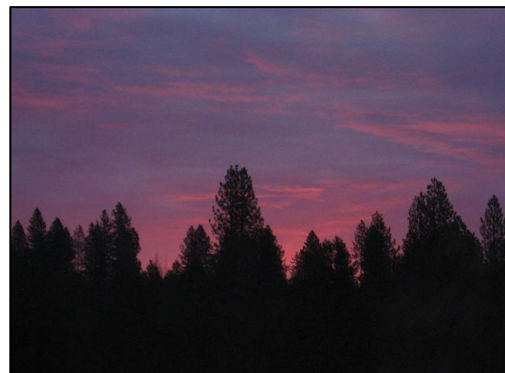
In 1950 or 1951 Chet Sheets sold his bowling alley known as The Bolero, and bought the land from Mr. Richardson (the buffalo was moved to land near Albini Falls Dam at Priest River. Chet's dream was to build a small lake and use it for a fishing club. In 1953 and 1954 Ray Toner (Larry's brother) was hired to build the lake bottom. Chet built the fish hatchery and three dams, (one dam across from Matt and Maggie Hansen's, Block 1 Lot 14). Bing Crosby was one buyer into the fishing club and at one time Larry Toner saw five planes by the hatchery. The fishing club didn't work out and Chet Sheets ran out of money. He sold it to Bill Main Realty. The A-frame cabin across from the Hanson's was from the Sportsman's Show and was used as an office to sell lots. The first two lots sold were to Allen Zoesch and Hugh Toner.

Later Glen Harrington (a banker) and John Pring (a Chevrolet dealer) bought from Bill Main. Larry Toner was hired to build the roads for the lake. For part payment, Larry was given a new Chevrolet car and a lot where he and Joyce still live.

*(As told to Jean Rickey by Larry Toner and printed in the RLCA Newsletter March 2003)*



Aerial view of lake provided by Phyllis Ells



Sunset photograph by Connie Kimbell, 2010.



## The Old Farmhouse



The old farmhouse is the oldest building on the lake and is located on the northeast end of the lake in Block 5 Lots 7 and 8. The house pre-dates the lake by more than 50 years and is over 100 years old. Chet Sheets lived here in the 1950s when the lake was being built and in the 1960s when he ran the fish hatchery (*Photo by Gordon Emry, 1981*).



Brian Emry bought his place in the early 1990s. Brian said, "*The old farmhouse was re-built inside and out. Most everything was recycled, such as oak wood, doors, and claw foot tub. Rocks were collected from Montana, Oregon Coast and a little bit from the Great Lakes. Both decks were built*



*with recycled wood that was going to be burned. The rock work took five years to finish because I kept adding a little more year after year."* He mentioned that you could see daylight through the walls of some rooms when he started.

## Chet Sheets (1948)

Chet Sheets is the founder of the lake, it is his vision that brought it into existence. His plan was to have a fishing lake and sell memberships. Today his name is on the Sheets Creek that flows from the south dam and on Sheets Road.

Al Griffin told this story about how he met Chet Sheets in 1948. Al and a friend were hitching from Oregon to Denver and they wanted to stop off and see Spokane. They got jobs setting pins for Chet Sheets at his bowling alley at the Garden Lanes. At that time he had most of the league play in Spokane. Chet was a small man and a great bowler. One day Chet said, "Boys lets take a ride." We went through the small towns of Chattaroy and Milan to a place where he said he was thinking about buying this land and building a lake. Al remembers that Chet had worked in Alaska and knew how to get things built.

*Interview of Al Griffin July 2011  
By Lucinda Wiser and Jerry Parker*

Ray Toner (Larry Toner's brother) was the person that used his heavy equipment to dig-out Reflection Lake. He did this work in the late 1950's. Ray Toner ended up having to file for bankruptcy because he was never paid for the work he did here. In the process of digging out the lake, he put in the three dikes: one on the north end, one on the south end, and a third dike that divided the lake into a large pond on the north end.

*Interview of Joyce Toner, July 7, 2010 by  
Lucinda Wiser and Phyllis Ells*



Newly constructed modern hatchery show water pipe from spring. More than 1,000,000 trout were reared here this year. *Spokesman-Review April 24, 1955*

Chet put much of his effort into the fish hatchery and lived on the eastside in the old farmhouse with his wife Shirley.

Chet sold the lake property to two businessmen from Spokane in the 1950s, Pring and Harrington. Chet stayed on to manage the hatchery and was a prominent figure in the minutes during the 1960s.

"Chet suggested that friends who are visiting, give one long and one short toot on their horn, so that he will know they are authorized." *RLCA Minutes 08/15/1962*

"In reply to a question "what do we feed the fish?" Chet Sheets said he feeds them 75 lbs. of ground tench daily." *RLCA Minutes 07/18/1962*

"Mr. Sheets requested property owners supply him with their make of auto, color of same, license number - and have cards printed to loan friends who they invite out as a means of keeping wanders out. It was also proposed that Mr. Ficca and Chet Sheets be deputized." *RLCA Minutes 10/13/1965*

"The announcement was made that Chet Sheets had passed away." *RLCA Minutes 10/25/1971*



The Spokesman-Review Sun., April 24, 1955. \* 5

# Reflection Lake Fishing Club Site

A new lake has appeared near Elk, 30 miles from Spokane. It is artificial, covers 80 acres, and is stocked with trout, raised in a hatchery which has been built on its shores.

The lake is under lease to the Pelican club, an organization of fishing enthusiasts of Spokane and the Inland Empire. It lies on 280 acres of land which is largely underlaid with springs, and these have been diverted to flow into what was once a meadow, providing a body of water 27 feet deep at one end and shoaling off to seven feet at the other. The lake is so clear it mirrors the surrounding hills and mountains, and has been well-named Reflection lake.

Two lakes in the midwest were the inspiration for the Pelican club project. Those lakes are owned by wealthy sportsmen who want to be sure of getting fish when they spend a day at the sport. The lakes are so well stocked there is no question about it.

## 100,000 'Bows Planted

Reflection lake is vastly different from the other two. A hatchery on its shore is raising the four kinds of trout which will be planted — brook, rainbow, brown and cutthroat—thus cutting the cost markedly. It also insures a steady crop of fish. One hundred thousand mature rainbows, varying from eight inches to three pounds, already have been planted and more than 1,000,000 eggs and fry are in the

troughs at the hatchery, with another 1,000,000 to come. All will be planted this year.

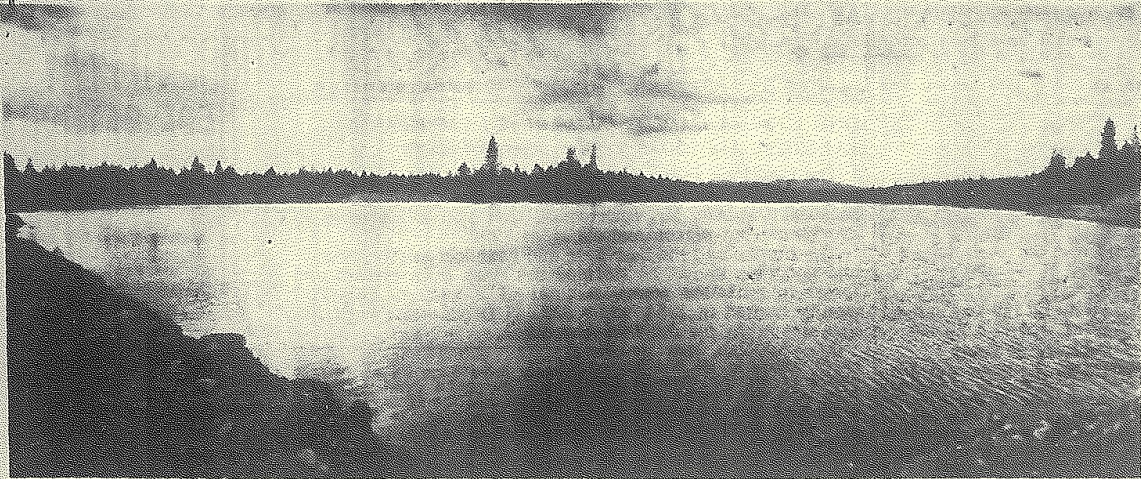
Members of the club need no license for fishing in Reflection lake and, eventually, their limit will be 100 pounds of fish per year, which may be taken at any time. This year, because of the limited planting, the limit will be "one scoopful"—in other words what the pelican mascot can hold at one time. Incidentally, "one scoopful" is the club motto, and members will be urged to observe it even after the lake is fully stocked. It is equivalent to the legal limit in the state.

The lake lies in a natural bowl, about two miles northeast of Elk, and is reached by a good county road. The meadow was a long trough between two benches. Dams were thrown across each end of the trough, and then the springs were switched from their natural courses into small rivulets which enter the lake at half a dozen places. The water is crystal clear, with a fairly constant temperature just right for trout.

A peculiarity of the lake is that it has two outlets, one at each end, which makes it possible to maintain a set level. The shallow end is separated from the deeper portion by a dam, and fingerlings and fry are transplanted from the hatchery to this shallow part after they have been held for a time in rearing pools being built along a brook which takes care of the runoff from the hatchery troughs.



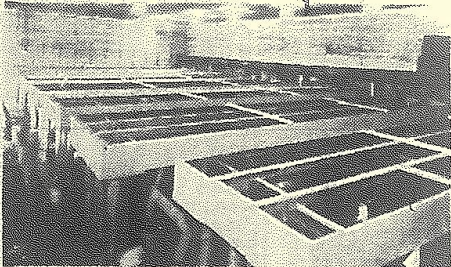
# REFLECTION LAKE...A Sportsman's Dream



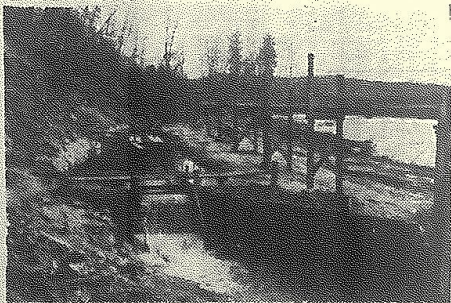
**REFLECTION LAKE**, a 90-acre body of pure, clear spring water located one mile east of Elk, Washington, 27 miles north of Spokane. This beautiful lake is heavily stocked with mature **RAINBOW TROUT** ranging up to **THREE POUNDS** which were planted last September! The lake is void of all scrap and spiny ray fish.



Newly constructed modern hatchery at Reflection Lake showing water pipe from spring. More than 1,000,000 trout will be reared here this year.



Interior of Reflection Lake hatchery where over 1,000,000 Rainbow, Eastern Brook and Loch Leven trout fingerlings await fall planting.



Beginning of multiple holding pools at Reflection Lake where the fingerlings are held before planting.

## RAINBOW TROUT PARADISE! *No License Required*

Beautiful Reflection lake is vastly different from any other lake you have ever fished. It occupies the center of a 280-acre tract, the west boundary of which lies along the Little Spokane river. Pine, fir and related species shade the banks and surrounding beaches. Ducks, upland birds and deer abound. Last fall the lake was stocked with over 100,000 mature rainbow trout. In the new modern hatchery located on the east bank of the lake there are in excess of one million fingerlings—**RAINBOW, EASTERN BROOK, LOCH LEVEN**—which await fall planting.

For fishing, hunting, swimming, boating, picnicking and kindred pursuits the lake would seem to afford about all the most ardent devotee could wish for, with the additional comfort of a certain degree of privacy.

## LET'S GET ACQUAINTED!

Under terms of an optional agreement with the owners, The Reflection Lake Pelicans, an incorporated club, has acquired all rights on the lake. Activities are to be restricted solely to members, their families and guests, with each member allotted his or her yearly quota of trout which may be taken free and unhampered. No fishing license is required. All hunting of birds and game, and angling in the Little Spokane, however, must be done under the provisions of the State Game Commission.

## REFLECTION LAKE SPORTLAND CAN BE YOURS, TOO!

### *Join the Pelican Club*

**PELICAN MEMBERSHIP WILL BE LIMITED AND APPLICATIONS WILL BE ACCEPTED, IF APPROVED, IN THE ORDER IN WHICH THEY ARE PRESENTED.** With the roster sufficiently filled, club directors will begin construction of a clubhouse. Fishing at the lake will be open this week end to all members.

Further particulars and application blanks may be obtained from Acting Club Secretary Lloyd White, 303 Lincoln Federal Savings & Loan Bldg. (Phone RI-2455) or from any of the following directors:

- James H. Maxwell, 2352 Elk, Wash.
- Dr. Gordon F. Baxter, Fidelity Bldg. RI-0118
- John Frick, W. 20 Mission, EM-2841
- Wellman Clark, Hutton Bldg. RI-1195
- William Sahlberg, Symons Bldg. TE-2587
- Fred (Bud) Adams, Northwest Bank, Box 7037 Garland Station. HU-8375
- Or
- The Garden Lanes, 333 W. Sprague. RI-1656

## Reflection Lake Pelican Club

*This is a Non-Profit Organization.*



## Bing Crosby and Reflection Lake (about 1957)



These pictures of Bing Crosby are from the Bing Crosby archive collection at Gonzaga University. Two members of the Lake History Project, Nan Bulish and Jerry Parker, spent hours looking for photographs that would connect Bing to Reflection Lake, but we found none. It was very clear by the quantity of fishing photographs that he was an avid fisherman. It is known that he was a good friend with John Pringe, owner of Appleway Motors in the 1950s, who was a partner in the ownership of Reflection Lake.



Terry Zoesch remembers that Bing Crosby was a member of the Pelican Club in the late 1950s. Later, he moved he to Newman Lake and was no longer affiliated with Reflection Lake.

Larry Toner remembered looking out and seeing five floatplanes tied up around the Reflection Lake Fish Hatchery in the late 1950s. Possibly it was Bing and his fishing buddies out for a day at Reflection Lake.



**Harry Lillis "Bing" Crosby** (May 3, 1903 – October 14, 1977) was an American singer and actor. Crosby's trademark bass-baritone voice made him one of the best-selling recording artists of the 20th century with over half a billion records in circulation.

In 1906, Crosby's family moved to Spokane, Washington. In 1913, Crosby's father built a house at 508 E. Sharp Ave. The house now sits on the campus of Bing's Alma Mater Gonzaga University, which formerly housed the Alumni Association.

*Wikipedia*

# Main Realty (1962)

## MAIN REALTY

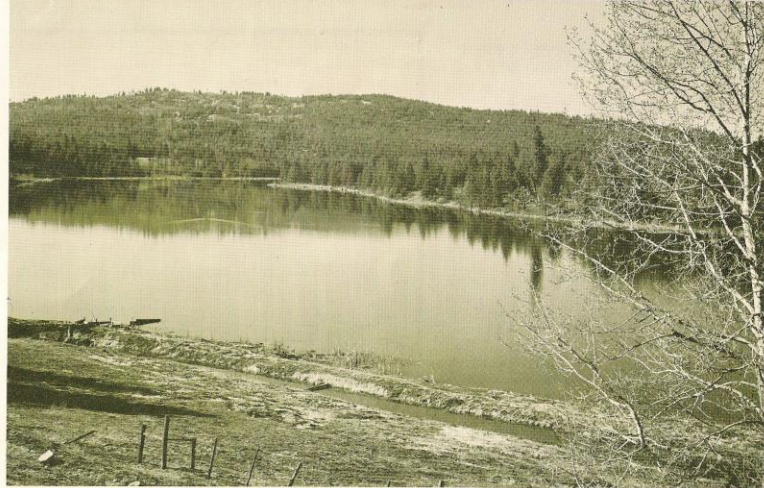
announces that  
Relaxing Lakeside  
Living can now be  
YOURS at lovely

## REFLECTION LAKE

just 25 mi. north of Spokane



**WASHINGTON'S ONLY  
PRIVATELY-OWNED-  
AND-CONTROLLED REC-  
REATIONAL LAKE!**



Here's the opportunity you've dreamed about! An opportunity to have your vacation home . . . your "home away from home." A "retreat" where you can really relax and LIVE! Near enough for perfect enjoyment EVERY weekend and holiday . . . just a half mile off the Newport Highway, 25 miles from Spokane's city center . . . yet completely isolated from public domain. Beautiful Reflection Lake, nestled like a jewel among thousands of verdant evergreens, is the ONLY lake in Washington State which can be COMPLETELY CONTROLLED BY YOU and your friendly neighboring families. This wonderful opportunity is yours now at a cost easily within your means!

**FISH  
WHENEVER  
you like**

... where there are NO LIMITS in length, weight or season! — Because YOU and your neighbors will have complete supervision of its 80 acres of spring-fed piscatorial plenty! Rainbow! Eastern Brook! Kamloops! — They're YOUR FISH!

## 100 LAKESIDE LOTS TO BE SOLD IMMEDIATELY!

The platting at right shows locations of lots in the available hundred. All are situated on gently sloping land along the scenic western lakeshore. Fifty have a 75-foot lake frontage, with depths ranging from 250 to 300 feet. The second tier (see right) of similar size lots have quick and easy access to the lake. The entire lakeside area is restricted to residential use. Get in on the ground floor NOW while you have your choice at these bargain prices!

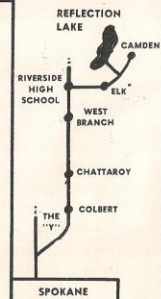
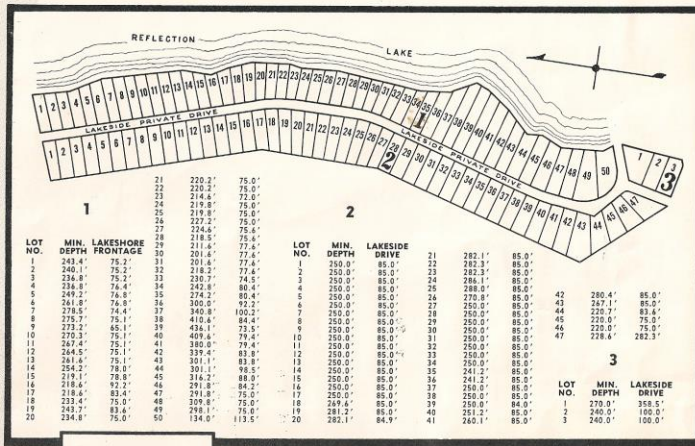
**CHARTER FAMILY COST:  
\$1250 to \$2400**

**20% DOWN — LOW PAYMENTS.**

At these unheard-of-prices for premium scenic lakeside location so near to Spokane . . . and the exclusive feature of complete private ownership and control of the lake . . . these offerings won't last long. With unprecedented increase in demand for recreational-residential property, these "charter family" rates even represent highly encouraging speculative opportunity. Frontage lots \$2400, non-frontage lots \$1250.

**FIRST COME . . . FIRST SERVED!**

These picturesque lakeside tracts are already selling fast. Several groups of close friends are already negotiating for adjacent lot sections where their close associations may be more conveniently enjoyed. You'll have many friendly and interesting neighbors. But the important thing is to ACT NOW . . . contact Main Realty for complete details.



## YOU HAVE YOUR OWN FISH HATCHERY . . .

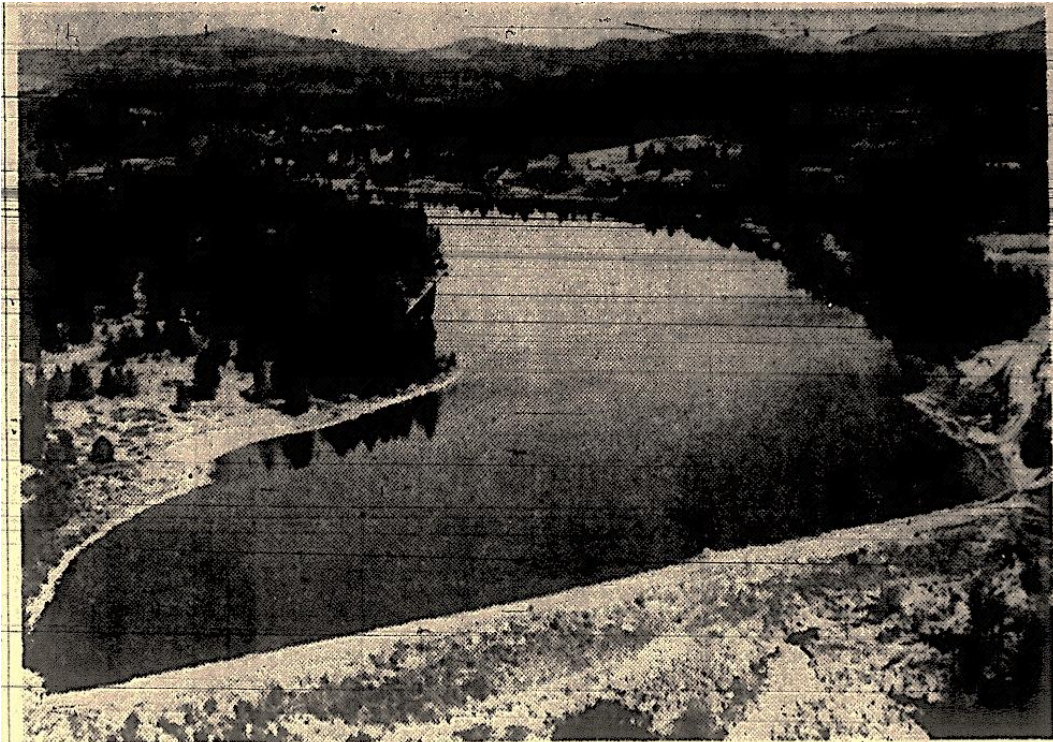
... a \$25,000.00 facility leased to the "Reflection Lake Association" of which you automatically become a member. You have a voice in the supervision, operation and control of not only the hatchery and all of the lake's fish, but also the rules and regulations that govern the entire lake and its lakeshore land.



# MAIN Realty

E. 34 Wellesley . . Spokane . . Phone HU 9-0630





**Lake Residential Area Planned**  
Reflection to be site of new area.

## Big Development Project Due at Reflection Lake

Plans for a large residential and recreation development rimming the shores of Reflection Lake, 25 miles north of Spokane, were announced Saturday.

Initial development will include 100 lots on the western shores of the lake, said William W. Main Jr. of Main Realty Co.

The 80-acre lake is altogether on private property and developers said property restrictions would not permit commercial development.

For many years the lake has been the private recreation area for a group of Spokane families and it is stocked with fish from a large private fish hatchery on the lakeshore.

Main said operation and maintenance of the hatchery would be continued by the Reflection Lake Association with all property owners becoming members.

The lake, a half-mile off the Elk-Chattaroy Highway and the development property are owned by Glen W. Harrington, N3418 Sargent, and John A. Pring, E8500 Sprague.

## 'Nyet' Shows Only English Spoken Here

CHARLESTON, W.Va. (AP)—Some months ago Elliott Sherwood received a circular saying a series of reference was being reserved for him, the first volume to be on Russia.

An enclosed return address card asked whether Sherwood wanted to buy the books. He wrote "nyet" on the appropriate line and mailed the card.

Someone in the publishing firm apparently didn't know "nyet" was Russian for "no." One by one Sherwood has received the reference volumes, which he has kept unopened to await developments. His correspondence from the publisher comes addressed to "Nyet Sherwood."

The company apparently has sold its mailing list, because Sherwood now is receiving circulars from other companies addressed to "Nyet Sherwood."

## Horse of 1861 Is Remembered

GALLION, Ohio (AP)—For 99 years, a beech tree on a farm west of here has marked the spot where a young Union Army volunteer buried his horse before marching off to the Civil War.

The young man's name long has been forgotten, but the inscription "Iron Horse, Died March 1861" can still be read. The present farm owner, Ora Zimmerman, says the term "iron horse" is an unsentimental description of the color of the animal and has nothing to do with its name.

## Building Is Down

NEW YORK (AP)—Building

## Bear Led

## US Army Corp of Engineers Report (1979)

The Army Corp of Engineers contracted with CH2M Hill of Bellevue, Washington to prepare a detailed study of Reflection Lake's two dams. The final report was made public in October 1979 and contained ten recommendations. On page 20 at the conclusion of the recommendation, it states:

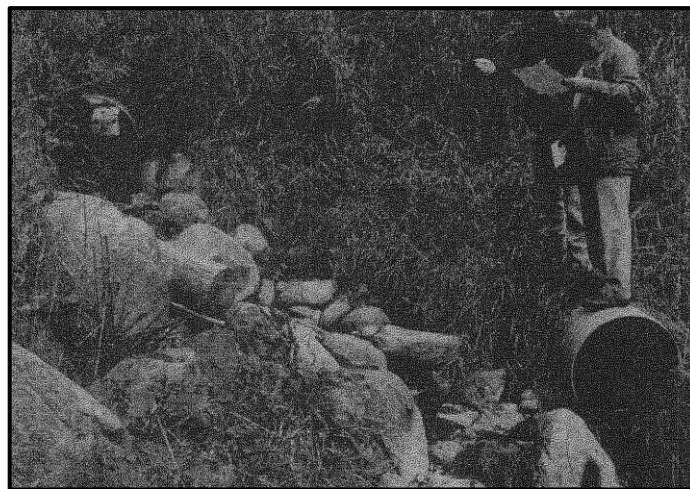
"If corrective action to make the project safe from structural and hydraulic/hydrologic deficiencies is not accomplished in a timely manner, recommend the South Dam be removed following procedures that will not endanger lives or property."

**This got the RLCA owners attention. If we do not take adequate action its likely that the south dam will be removed, thus ending the lake.**

Without delay, Jon Svennungsen, a lake lot owner and engineer, responded to the Army Corp of Engineers for the Reflection Lake Association. Each recommendation was addressed with immediate action taken.

- In order to partially handle the PMF (probable maximum flood), we have lowered the lake to increase the storage capacity of the lake.
- We are presently in the process of removing brush and roots from the faces of the South Dam.
- A Consulting Engineer will evaluate the dams for overtopping as stated. This person will address the other issues contained in the report.

This dam safety study put in motion a decade of effort by the Association to bring the dams up to safe standards. Volunteer work parties were active week after week: cutting and clearing brush, trees and roots from the north and south dams; raising money for the new spillway; having core samples studies completed on the south dam; adding material to raise the elevation of the dams and finally building the spillway. How did they do it? Mostly volunteers and a lot of hard work.



South dam. Spillway (left) and old outlet (right)  
*This photograph is taken from the original report.*



## 28 Washington Dams Unsafe

Three eastern Washington dams are on a list of 28 Washington dam believed to be unsafe in a probable maximum flood, according to a U.S. Army Corps of Engineers report.

Listed as unsafe, if the maximum flood and storm occurred, were Power Lake Dam, a hydroelectric rock-filled dam 7 miles southwest of Cusick in Pend Oreille County; Hunter Dam, a privately owned dam used as road fill 2 miles east of Hunter in Stevens County; and the Reflection Lake dams, two rolled earth dams used for recreation 4 miles northeast of Milan in Spokane County.

None of the dams were listed in "imminent danger," said Mike Talbot of the Corps. But they are believed to have the same problem: They possibly would fail if a maximum storm occurred.

In its report, the Corps of Engineers recommended that the owners of the dams develop downstream warning plans, conduct detailed engineering studies and modify the dams accordingly to a study recommendation, Talbot said.

In addition, Pend Oreille Public Utility District 1, owner of the 50-foot-high Power Lake Dam, was told to remove logs and debris from spillway and the reservoirs' perimeter.

The Reflection Lakes dams, owned by the Reflection Lake Homeowners Association, are an 8-foot-high north dam and 23-foot-high south dam. The report recommended the south dam's embankment be investigated for stability, which means there should be some core drilling done, Talbot said.

For the 65-foot county road fill Hunter Dam, owned by Don Dale, the report recommends a debris collection system installed so the outlet isn't blocked. Talbot added that if the dam is not repaired in a reasonable time, it should be removed.

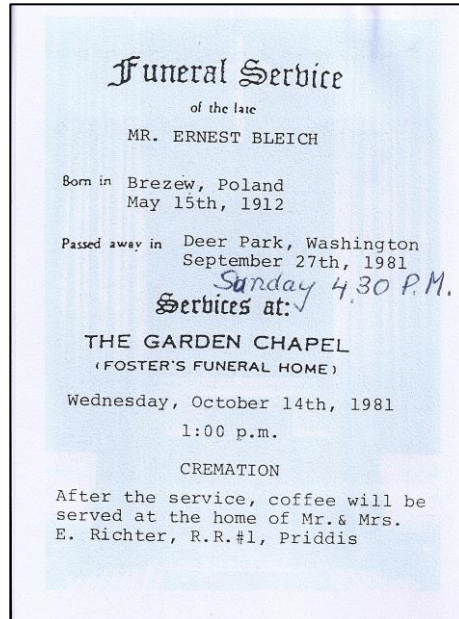
Talbot said the corps inspected the dams and wrote the report, but enforcement responsibility rests with the state.

Persons responsible for the dam study in the state Department of Ecology were not available to comment today.

The corps inspected 100 dams in the state.

*This article goes on to list all of the unsafe dams in the State of Washington. Re-typed due to very poor print quality of the original newspaper.*

## Ernie Bleich Memorial Dam September 27, 1981



“We are sorry to close this newsletter on a sad note. To any of you who do not know, Ernie Bleich, our neighbor, friend and Superintendent of the Lake, was killed in an automobile accident on September 27<sup>th</sup>. He will be sorely missed.

We will be erecting a Memorial Plaque on the dam as a memorial to Ernie. We would never have completed our dam repair work without him.”

*From the 1981 RLCA Newsletter*

From our interviews with people on the lake we have learned more about Ernie Bleich. He was born in Poland and immigrated to Canada to escape the Nazi's who wanted to use his engineering skills in the war effort in World War II. He came to the lake in the late 1970's and was visionary and energetic on many lake projects. He is known for his building of the waterwheel house. He intended to use the lake overflow to generate electricity. His untimely car accident happened on the intersection of Highway 2 at Riverside.



“The brass plate in memory of Ernie Bleich will be installed on the spillway.” *RLCA Minutes 09/01/1989*



Jean Rickey's scrapbook page (1980's)



1980's

- Lower the Lake to control Weed growth!
- Had to lower Lake to build new spillway on South Dike.

View:  
North Dike Looking South



Pictures taken by "Jean"  
Rickey



Jean Rickey's scrapbook page (1980's)



1980's: Top is view from North Dike looking south  
Bottom is looking east from Block 1 Lot 47 (Mike and Nan Bulish's place).



Jean Rickey's scrapbook page (1980's)



1980's  
View: South Dike Looking North.



Pictures taken from Jean Rickey's Deck.





Jean Rickey's scrapbook page (1990)  
Building of the spillway

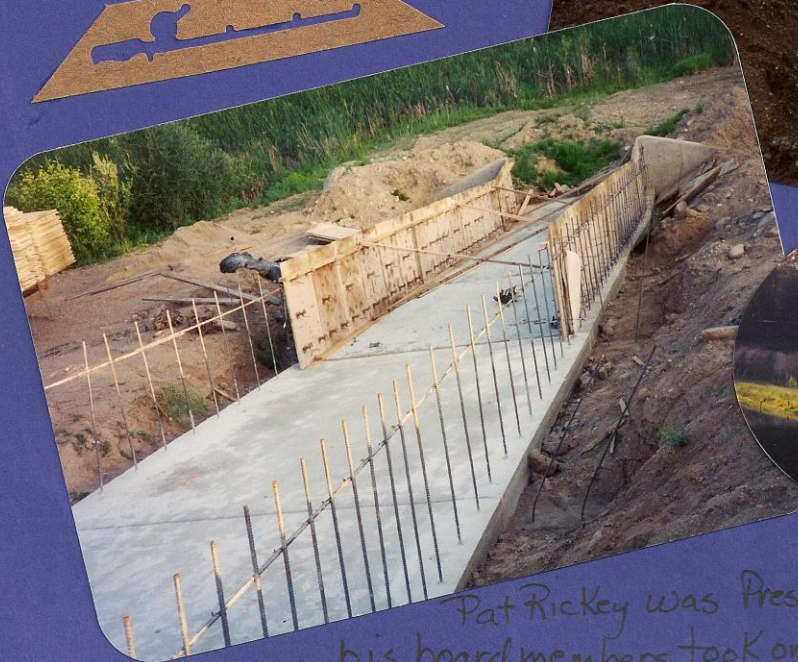


MARK Wiser & Pat Rickey  
Checking South Dike inside  
valve.

"1990"



CARL Hockhalter Compacting Dike!



Pat Rickey was President of Assoc. Pat and  
his board members took on a very large Project!



Jean Rickey's scrapbook page (1990s)  
Lake choked with weeds





## Lake Entrance Sign (1992)



Mark Wisner was looking through some of our photographs and he said, "Those are my legs." He explained that he had found a young local woodcarver to create the sign out of redwood that was four by eight feet by four inches. Due to the sign's weight he used two sixteen foot six" by six" posts and Ralph Blake dug two six-foot holes with his backhoe. We put a full yard of concrete into each side. Twenty years later it still standing and looks good, thanks to a solid installation and on-going refurbishing.



Photograph taken by Jerry Parker, October 2011.



## Grass Carp (1994-1996)



*Mark Wisner on south dam  
December 25, 2011*

The biggest problem Reflection Lake has had for the first forty years is excessive plant growth. Many actions were taken to reduce the lake's vegetation: using a variety of herbicides, dragging with a cable, using motorboats with rakes and cutters, as well as draining the lake to freeze the plants in the winter. Nothing has had a long-lasting result.

Mark Wisner spent nine years on the board analyzing the water quality of the lake and looking at the alternate methods of plant control. A committee was formed in 1993 composed of Mark Wisner, Kate Wisner and Carl Hockhalter to make recommendations. They made a proposal to the board to adopt a biological control method using grass carp to eat the vegetation. In August 1993, Mark applied for a permit to plant grass carp. This permit was approved March 1994 if the fish screens on the outflow from the lake were improved.

April 1994, 504 grass carp were planted with a 100 percent survival. Mark Wisner reported to the 1995 Annual Meeting that an additional 500 grass carp were added to the lake in October 1994 for a total of 1,000. Our goal was to try to maintain at least 25 percent weed cover in order to use the nutrients that occur in a lake naturally. If the vegetation is not maintained, the lake will be susceptible to algae blooms and increased turbidity.

The following year Mark, met with the Fish and Wildlife officers and were informed that they had changed their

*Information from the RLCA Minutes  
Lake History Project, September 17, 2011*

recommendation for planting carp; the ideal number was reduced from 3,500 to 2,000 for Reflection Lake. They had discovered that lakes that had planted the full amount were eaten-out, which led to problems with algae blooms, decreased water quality and turbidity.

The RLCA board approved the planting of an addition 1,000 grass carp on March 29, 1996. Mark addressed the community at the Annual Meeting (1996) that the carp will not be an instant solution; we should be committed to a five-year plan before declaring the program a success or failure. All of the grass carp that were planted are triploid fish, meaning they are infertile and cannot reproduce. The expected life span of this species was thought to be ten years. Any carp planted in the future should only be to replace lost fish.

Since the early 1990s, fishery professionals have learned a lot about the use of grass carp as a biological control of excessive weed grown in lakes. These carp seem to be much longer lived than previously thought in this climate and have grown to a large size.

In 2011 there is an on-going conversation within the Reflection Lake community about how many carp remain in the lake. There are estimates from a few dozen to hundreds. The Conservation Committee expects to be replacing the grass carp in the future as the numbers dwindle.



*Often parts of Reflection Lake looked like this during the first 40 years. The water was very clear from the oxygen produced by the plants, but it was difficult to row a boat, swim or fish. Two common species were Coon-tail and Elodea.*



## Reflection Lake Annual Picnic (2001)



Winners of the boat race: Carl Hockhalter, Dan Tachell, and Jim Boothby. Vern Smith was the official starter.



Fun, Fun



Dam Committee (2003-2011)



Defective trickle tube was removed.



Toner's built cement overflow, 2011.



Original 36" overflow replaced.



Replacing 36" overflow in 2006.



John Fechner designed new fish screens.



Dam Safety Officer inspecting work.



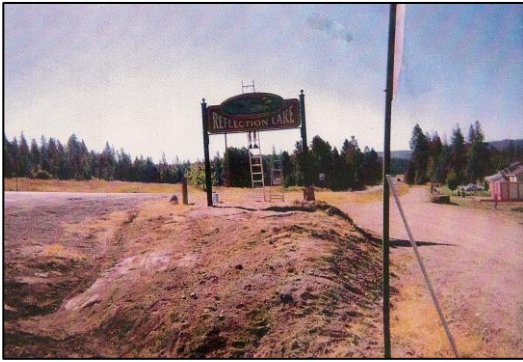
John Fechner and Phil Smith planning.



Concrete re-enforces overflow.



## Trees on Frontage Road (2003)



*Frontage Road in 1992.*

One of the first things you see when approaching the lake from Riverside on the Elk-Milan Road are the deciduous trees in the median. They were planted largely through the effort of Lori Johnson and Janet Bronkhorst. By 2011, the trees have become well established and add color to our autumn landscape.



*Taken at the intersection, September 2011*

### From the Minutes

“Lori Johnson was given the okay to come up with some plan for the median dividing Frontage Rd and Milan Rd.” *Minutes 11/05/2002*

“Lori Johnson received a bid for new trees on median between Frontage and Elk-Milan Road. Mt. View Nursery quoted \$1,200 for 14 trees. Carl Hockhalter made a motion to accept the bid and let Lori move-on with her project. Approved” *Minutes 05/06/2003*



*This is Frontage Road looking south. (September 2011).*



*The maple trees of Frontage Road are showing their color. Photo by Lucinda Wisser, October 15, 2011.*

One generation plants the trees; another gets the shade.  
*Chinese proverb*



## History Stump (2006)



This tree stump predates the building of the lake in 1955. Every summer it supports an island community. (2006)



Clear water provides a view of the root system that still holding. (2009)



The lake level was down 4 feet to expose the root system. The wood is solid and may last another 50 years. (September 2011)

## Bishop Park (2006)



*Photo taken August 2011 by Jerry Parker*

The Bishop's built their lake home and it became a local landmark for decades. Called Bishop's Barn, directions are given by saying: "it is the access lot next to Bishop's Barn."

We spoke to Russell Bishop (son) in September of 2011 on his dock. He said his father purchased Lot 16 in 1968 and they built in 1972. When his Dad retired from Keizer, they moved out to the lake fulltime.

Alex and Donita's daughter, Paula Sawle, an artist, designed the Bishop Park monument. It was dedicated in 2006 and has become an attractive part of the community.

Alex Bishop and Al Griffin lived on each side of access lot 15. Together they did a lot of clearing and cleaning, installing a sprinkler system and planting a lawn. It has always been one of the more park-like access lots on the lake.



This is freshly painted Bishop's Barn in 2011. Alex had runways set-up for the squirrels to make their way between trees.



After 40 years Russell is replaced the dock in 2011. The end of the original dock was built on a large stump.



## Fish Planting (2007)



John Fechner, a member of the Conservation Committee, monitors the fish delivery. In recent years John has gotten the permits, ordered the fish and been on-hand with a RLCA check to pay the driver.



These Rainbow Trout grew up in the ponds at *Troutlodge* and have just made the morning trip from Soap Lake, WA.

*Lake History Project*  
September 27, 2011



The transfer to the lake is quick and efficient as the good size fish slide out of the plastic shoot into the cool water of Reflection Lake.



The new trout swarm around the dock at Bing's Landing, figuring-out their new environment. The lake is closed to fishing for several weeks after they are planted to allow for acclimatization.

*Photographs by Nancy Osborne*  
March 2007



SE Access was named Bald Eagle Beach in 2007



September 1989: Photo by Edith and Harold VanDerLinde

“Eastside Beach/Access Lot: Joel took a look at the disintegrating granite, but it was frozen hard. There is quite a bit down there. He will put together a work party sometime in May since no one will be swimming before then, but people might want to be launching their boats. It will be possible to push only so much in the water with the backhoe. The work party will do the dock at the same time. They are thinking about building a long skinny solid dock...”  
*RLCA Minutes: 03/19/1996*

**“Construction Committee** report given by Carl Hockhalter: Sunshade received one sealed bid of \$3,145.00, 56 man hours, 12X20 feet. Dan Loos made a motion to approve the bid and Maggie Hansen second the motion. Double Diamond Construction Company was awarded the bid.”  
*RLCA Minutes 10/05/2004*



September 9, 2011



*Bald Eagle in cottonwood tree at Bald Eagle Beach. Photograph by Susan Nash*

Bald Eagle Beach is the most popular access to the lake in the summer. It is the primary location where boats can be easily launched, and many lot owners store their boats next to the beach. We have a pack-it-in, pack-it-out policy, and in general, our community does a great job of keeping the area clean. It is common to observe Bald Eagles from this beach.



Record Winter Snow (2008-2009)



## Bing's Landing Access (2009)

For many years the access lot at the south end of Block 1 was known as Lot 43. This name often created confusion for those not familiar with the plat map of the Reflection Lake Addition. In 2009, the RLCA Board held a contest at the Annual Meeting to nominate names for this access lot. Bing's Landing was the winning name provided by Phyllis Ells. This name honors the memory of Bing Crosby, one of the early famous fishermen at Reflection Lake. *(For more information on Bing Crosby see page 34).*



*Photo by Jerry Parker (2009)*

Today, Bing's Landing remains a popular access to the lake. It is not unusual to observe people swimming between Bald Eagle Beach and Bing's Landing in the summer.



*Photo by Susan weeks (2010)*



*Photo from the Bing Crosby Collection, Gonzaga University*



*Bing's Landing dock with exposed steel pilings, 2011.*

Carl Hockhalter originally built this dock with volunteer help and donated materials in the 1990s.

In order to provide more things for kids to do the Social Committee planned the construction of a small basketball court at Bing's Landing in 2009. Toner's Sand and Gravel donated their time and equipment to do the site preparation and finishing. Association members provided additional labor: Rick Smith, Mike Bulish and Jeff Lattin.



## Carp Round-Up (2009)

It was a short sleeve lake morning and boats of every type were emerging from all around the lake. We all had one common task in mind: We were to form a wall of water craft at the south dam, making as much noise as was possible, we could “herd” the aging grass carp population to their fate at the waiting gill-net stretched across the lake on the north end. The cooperation among the citizens of the lake was perfect. Around the lake you could hear the drumming on aluminum boat decks, splashing of paddles, whistles and ear-splitting war-hoops from Carl, along with much laughing and conversation. Expectations grew as our armada of vessels slowly pushed our way north. The weather and wind could not be more ideal and we wondered, what are the carp doing? Someone remarked, “I don’t think I have ever seen so many people on the lake at one time” and they were probably correct. The net crew stood manning their stations ready to harvest the day’s catch.

Even when an experiment fails, you learn something. Our Reflection Lake grass carp have a strong sense of survival and are unwilling to be herded. They have out lived their expected life cycle, and they continue to graze and do what we hoped they would do: eat the aquatic vegetation.

**Results:** The Grass Carp all survived to graze another day. The People all had a good time, and some said they could have predicted that the carp were too smart to be herded. We all had fun, and I wish we could do it again.



*Joe Whelham at the start of the drive.*



*South end with Phyllis, Glen, Nan, Mike and Jerry*



*Here we are turning around at the north end of lake.*



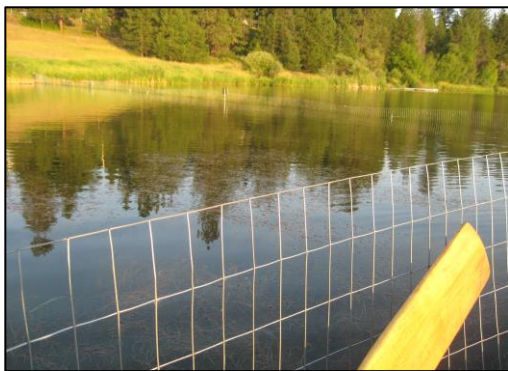
*We find-out that we are skunked and head for home.*

## Lake Study Site (2009-2011)

In 1999 and 2000 the lake was professionally treated with the herbicide *Sonar*. The results were effective in reducing the aquatic vegetation to near zero. At this point the remaining grass carp kept the aquatic plants from re-colonizing the lake and we did experience algae blooms and turbidity. Dan Loos observed one carp in the green belt half out of the water grazing on grass. Efforts were made to reduce the number of carp because of the impact on re-colonization. It was found that they are very difficult to catch, snag, shoot or herd. Even with a bow and arrow it requires a great deal of patience and skill to get one.



The Conservation Committee composed of John Fechner, Hugh Polensky, Terry Zoesch, Craig Dowdy and Jeff Lattin built a screened area of 1/3 acre when the lake had been lowered for maintenance. The plan was to plant several aquatic species to help with water quality. What was found was that planting was not necessary because after a few weeks the available vegetation was colonizing the study site and thriving. This was because the grass carp did not have access.



*A view of the study site at the NE end of the lake.*



By the end of the summer the vegetation was floating on the surface, which is much like what the whole lake looked like in the early 1990s. It was observed that it made wonderful habitat for our painted turtles.

By late summer another experiment was conducted. The fence screen was opened to the grass carp so they could have access to this lush vegetation. It was noted that they seemed to have a preference for certain species, but within weeks, it was eaten-out. The study site screen was removed in the fall of 2011.



*38" grass carp weighing 28 lbs. caught by Lee Osborne in July 2009 with bow and arrow.*



## Turtle Haven (2011)

### Turtle Haven access

The northeast access to the lake was named at the 2011 Annual Association Meeting. A slate of names were suggested and after a run-off election, Turtle Haven was the winner. This is the fourth and last access lot to be named at Reflection Lake.



Photo and sign by Jerry Parker (2011)

### Western Painted Turtle

The turtles of Reflection Lake belong to a subspecies of painted turtles called **western painted turtle** (*Chrysemys picta bellii*), which is one of the most common turtles in North America.

- One reference said that these turtles might live up to 55 years. If true, some of our turtles may be as old as the lake.
- They spend their time in the soft bottoms of the lake, as well as in the aquatic vegetation and in sunny basking spots on or near the water.
- They are omnivorous, eating fish, insects, plants, carrion and anything else they find. Some fishermen leave their unwanted perch near the shore for the turtle's dinner.



Photo by Al Griffin early 1990's of a turtle log belonging to Mark and Kate Wisner

- During the winter, the turtle hibernates. In the north, the inactive season may be as long as from October to March, while the southernmost populations may not hibernate at all. While hibernating, the body temperature of the painted turtle averages 43° F. When hibernating underwater, the turtle prefers shallow depths, no more than (7 ft). Within the mud, it may dig down an additional (3 ft). In this state, the turtle does not breathe, although if surroundings allow, it may get some oxygen through its skin.



Photo by Lee Osborne (2011)

- The western painted turtle grows up to (10 in) long. Its bottom shell has a large colored splotch that spreads to the edges and often has red hue.

## Lake Cleanup Day (2011)

Since the beginning of the Association, work parties have been an on-going way of getting things done. For the last several years, we have had a cleanup day the first Saturday in May, which starts at 10:00 and ends at 12:00 with a BBQ. Usually we have about a dozen people, but we could get more done with more help. All are invited.



Lee Osborne and Jerry Parker building a rail fence above the center.



Glenn Ells cleaning the lot.



Nancy Osborne painting trim.

*Lake History Project  
January 18, 2012*



Terry Zoesch clearing rotten stump behind the center.



Having conversation and lunch at the Center. Note the freshly painted trim.



Some of us were thinking, "I am glad it didn't rain this year."

We hope to continue to gather community members for this annual event on the first Saturday in May each year.



# Lake Wildlife



Squirrel escapes, 2009



Daniel Vander Meer and a nice trout, 2010



Carry-over rainbow, 2011



Nesting robins, 2006



Tundra Swans, March 15, 2008



Wild turkeys, Block 3, 2007



Gordon Emry found two visitors in the greenhouse, 1989



Yes, we have Canadian Geese



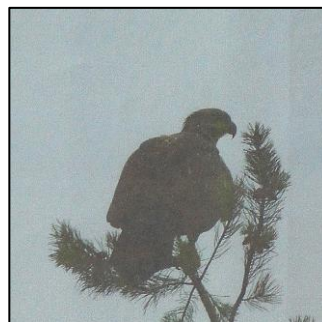
Brown trout being planted 2011



Melodie Dowdy with a well fed Reflection Lake grass carp.



Winter 2008



Sub adult eagle taken by Hugh Polensky

*All photographs are from community members*

Lake Wildlife



Pine Siskin and Finches eating on seed bag



A lone Loon



## Lake Wildlife



The great deer herd on the lake. Counted 25+



A cow moose out for a swim

Lake Wildlife



Eagle is feasting on goose that it took out of the air. Saw this one.



A hungry visitor to the deck (Grey Squirrel).



## Lake Wildlife



The Great Blue Heron hunts from a pile of rocks. Photo by Linda Loos, 2011



A Mink visits David Vander Meer's dock in 2009.  
Photograph by David Vander Meer

## Lake People and Snapshots



Lisha, Phyllis, Nan and Anita at Halloween, 2009



First Lake History Meeting, 2010



Abram Cosby, 2009



Welcome to the lake, 1998



Theron Wiser, Charlie Fender and Lucinda Wiser, 1994



Doug Householder Planting fish, Nov. 2011



Gordon Emry and Matt Lee 1980s



Carl, Sandi Hockhalter with Nancy Osborne, 2010



Jeff Lattin with son Josh



Dan Loos at board meeting, November 1, 2011



RLCA Board, 2010



Allison (Kimbell's granddaughter) exploring the lake bottom



Halloween 2008 at the Community Center



Edith and Harold VanDerLinde, 2011



2012 T-shirt logo



# Lake People and Snapshots



Nancy and Lee Osborne, 2009



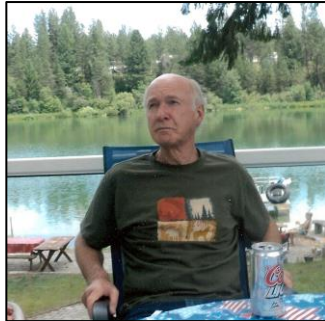
Lucinda Wisner and Ben, 2007



Hugh Polensky, 2010



Anita Smith, Halloween Event 2009



Glenn Ells, 2011



Joyce and John Boone, 1982



Linda Indiveri, 2011



Gordon Emry family, 1980s



Board meeting, 2010



Terry Zoesch, 2011



Susan Weeks, 2011



Phyllis Ells, 2011



Nan and Mike Bulish



Likely Phyllis Ells, 2009



Phil Smith welding with a worker from Toner's.



# Lake People and Snapshots



Melodie Dowdy,  
ice fishing



Craig Dowdy at Board  
Meeting, Nov. 1, 2011



Susan Nash and Carolina  
Cosby, 2011



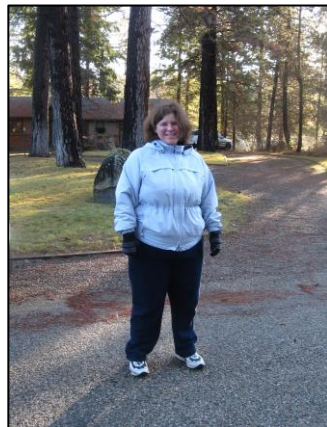
Jerry Parker, Lake Clean-Up  
Day 2011



Joyce Boothby  
Dec. 26, 2011



Sharon and John Fechner



Kathleen Boothby  
Dec. 2011



Hugh Polensky and  
grandson Riley, 2011



Chester



Hockhalter's snowman



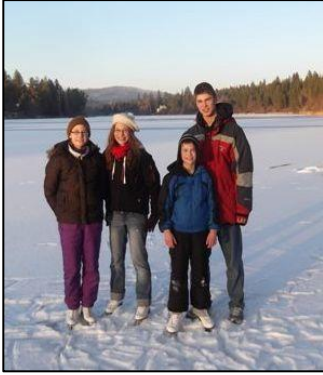
Lorie, Neal and  
Connie Kembell daughter,  
holding great  
granddaughter Aeiva Maria  
at Bald Eagle Beach



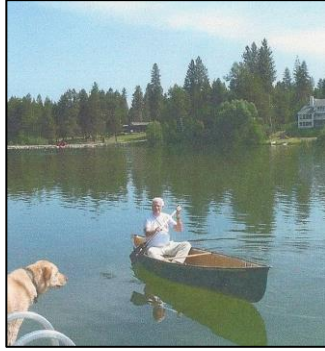
Ian Emry, grandson of  
Nadine and Gordon, 1986



## Lake People and Snapshots



The four of Neal and Connie's grandchildren, Julia, Jessica, Jarom and Jacob enjoying a fun day of ice-skating, Photo: Patrick Kimbell 2011.



Ron Rowley getting ready for carp roundup, 2009



Sydney and Nathan on the wakeboards, from left to right are Melissa, Kari Daniel and David Vander Meer



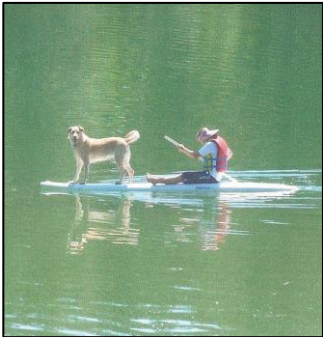
Pat Shay fishing with grandson at Bald Eagle



Cara looks in window that is 8' above the ground at Maureen and Hugh's house.



Cowboy Daniel and marshmallows (2009)



Nicole, Maureen and Hugh's granddaughter with water dog Cara



Kaylie Vander Meer and lake turtle (2010)



Nadine Emry, Vicki Eckley and Will Emry, mid 1980s



Girls from the campground canoeing



Melissa, Alyssa and Kathy Vander Meer (2010)



Gordon and Nadine's granddaughters Ame Eckley and Alicia Emry, 1995

Lake People and Snapshots



Three generations of Osbornes "Noodling" on 4<sup>th</sup> of July 2011, Lori, Nancy and Ashley



Anita and Rick Smith



Christopher "Kit" Cosby, 2006



Eddie Hyson, Jerry and Lucinda's grandson, 2011



Anita and Rick's home



Rob Villalobos with Rainbow Trout, June '08



Hanna, doing the dog paddle.



Kayla Devlin, Nancy and Lee's granddaughter, 2009



Phyllis and Glenn Ells with John Boone at his home on Reflection Lake 2011



Christopher Nash



Ian, Dylan and Logan Parker, Lucinda and Jerry's triplet grandchildren, 2010



Debbie and Dale Ronquile at Dale's retirement party 2011





*A lake is the landscape's most beautiful and expressive feature. It is earth's eye; looking into which the beholder measures the depth of his own nature.*  
~Henry David Thoreau<sup>[1]</sup><sub>[SEP]</sub>



## Section III. What the Minutes Tell Us

Recognition Noted in the Board Minutes	72
Plat Information	73
Minutes from the first meeting, July 18, 1962	74
Board Officer, 1962-2011	76
Board Members, 1962-2011	78
Excerpts from the minutes, 2011-1962	80
Lot Assessment	91
Lake Management	92
Water Quality	94
Community Center	96
Description of Dam Sites	97
Reflection Lake Water Association	98
Aerial photograph of the lake bottom	100
South dam foot valve	101



*Bald Eagle Beach, 2008*



## Recognition Noted in the RLCA Minutes

“The treasurer was authorized to purchase a fifth of whiskey for Jerry Gaffney for his help with the culverts.”  
*Minutes 03/1968*

“Merit Awards were passed out for a good job done on the dam: Ernie Bleich, Jon Svennungsen, Bob Hovatan, Leo Wilson, Fred Brown and Robert Rosi.” *Minutes 07/19/1980*

“The brass plate in memory of Ernie Bleich will be installed on the spill way.”  
*Minutes 09/01/1989*

Jim Boothby was presented with a thank you gift for hardest working board member. *Minutes 07/20/2002*

“...a motion to recognize Jim Boothby as the board member of the year. Carl seconded the motion and it was carried. Thank you Jim for all your hard work for the community. *Minutes 07/03/2007*

2010 Community Service Award to Jerry Parker

2011 Community Service Award to Sandi and Carl Hockhalter

2012 Community Service Award to Joyce and Jim Boothby

## Reflection Lake Community Association Plat Information

Block	Lots	Owners	Non-Dues lots	Dues lots
1	50	39	3	47
2	47	31	0	47
3	3	1	0	3
4	2	2	0	2
5	8	4	0	8
6	22	16	0	22
7	40	25	1	40
8	20	14	6	14
<b>Total</b>	<b>192</b>	<b>132</b>	<b>10</b>	<b>182</b>

The non-dues lots are the three access lots in Block 1, the Community Center in Block 7, the five lease lots in Block 8. There is an agreement on the lot above Bald Eagle Beach to waive dues because a portion of the lot was excavated to create the dam.



*Photograph by Connie Kimbell, August 2008*



## Minute from the first association meeting (1962)

MEETING OF JULY 18TH, 1962

The first meeting was opened and conducted by Bill Main, of Main Realty.

So that we would have a report of the meeting, nominations were opened for the office of secretary. Mary L. Larson was nominated and elected.

The next issues at hand were some of the current problems. The first problem discussed was that of the weeds in front of the fish hatchery. Bill Main has loaned a pickup for pulling the weeds that are in the middle of the lake. Bob Wideman has offered the use of his boat, the weekend of the 28th and 29th, using a cable to pull the weeds out.

The next issue brought up was that of stocking the hatchery for next years fishing. 30,000 rainbow trout,  $3\frac{1}{2}$  to 4 inches long, should be planted now for next years fishing. The cost would be \$120.00 per thousand fish or \$3,600. Chet Sheets has contacted a Mr. Beady who will go on a time contract basis to supply the fish. Chet also has talked to a man on the Little Spokane River who has 20,000, 6 to 9 inch fish, for \$750.00. Also suggested was the purchase of 50,000 eggs at \$2.50 per thousand for a total of \$125.00, this to insure fishing for 1964. So the total estimated outlay is \$4,975.00 with \$300.00 from each lot sold to go into the hatchery fund to maintain the hatchery.

There is \$5,100.00 coming to the association from the sale of 17 lots. It was suggested that possibly two contracts could be sold to an investor. The balance owed on two contracts is \$3,840.00 at 6% interest per annum at \$20.00 per month. An investor buying them would receive a 10% discount, so it would cost him \$3,456.00. Individuals cannot be attached for these contracts, just the association as a whole.

In reply to a question of "what do you feed the fish?" Chet said he feeds them 75 lbs. of ground tinch daily. The dry feed for fish costs 15¢ per pound plus freight. There are just enough tinch in the lake to use for feed, in addition the weeds provide food. A fishery man unbiasedly said the fish already in the lake were the healthiest he'd seen.

Everyone at the meeting was in favor of the hatchery stocking program. It was suggested that when the lake is re-stocked it be advertized to create an interest to the public so that more lots could be sold.

Not too much fishing has been done so far, but the question was raised, "should there be a limit to the number of fish caught?" It was discussed that there should be no limit to the property owners, but a fishing limit on friends and guests.

As there have been unauthorized people fishing in the lake, it was discussed that possibly identification cards could be issued to property owners, to keep out trespassers, and also put up signs stating prosecution for trespassers. It was also mentioned that possibly Chet could become deputized to get the needed authority to keep trespassers out.



## Minute from the first association meeting (1962)

Page 2

It was mentioned that the cost of the road up to this point is \$4,500.00

Mr. Abbe suggested the possibility that the Association incorporate as a non-profit organization to protect itself, but Bill Main called his attorney and said that it was already considered a non-profit organization.

Nominations were opened for the office of President. Bill Main nominated Larry Metler and listed his qualifications and enthusiasm for the project. He was so elected to the office.

Some of the future plans for the lake are the widening of the dike road eventually to 24 feet and the possibility that the county will take over the road so that it will be taken care of during the winter. It was mentioned that the property values can double in two or three years, if everyone gets pitching together.

It was also mentioned that something should be decided concerning people who buy a back lot, but who don't plan on building, to have all their friends out fishing.

It was decided the next meeting should be held July 25, 1962, at 7:30 P.M. at Main Realty.

Respectfully submitted,

Mary L. Larson

Patricia L. Miller



Moonlight reflecting off the surface of Reflection Lake.  
Photograph by Linda Loos



## Reflection Lake Community Association Officers

Year	President	Vice President	Secretary	Treasurer
2011	Hugh Polensky	Craig Dowdy	Melody Dowdy	Jerry Parker
2010	Hugh Polensky	Craig Dowdy	Nan Bulish	Jerry Parker

2009	Hugh Polensky	Craig Dowdy	Nan Bulish	Jerry Parker
2008	Terry Zoesch	Lori Johnson	Rhonda Burnham	Jerry Parker
2007	Lori Johnson	Janet Brockhurst	Lucinda/Rhonda	Jerry Parker
2006	Jim Boothby	Lori Johnson	Lucinda Wiser	John Fechner
2005	Matt Hansen	Jim Boothby	Sandi Hockhalter	John Fechner
2004	Dan Loos	Jim Boothby	Sandi Hockhalter	John Fechner
2003	Dan /Mike	Sandi Hockhalter	Corrine Zimmerman	Lori Johnson
2002	Mike Christman	Dan Loos	Leslie Cushman	Maggie Hansen
2001	Carl Hockhalter	Jim Boothby	Leslie Cushman	Jona Blake
2000	Larry Zoesch	Dave Vandermeer	Leslie Cushman	Jona Blake

1999	Larry Zoesch	Dave Vandermeer	Dan Loos	Carl Hockhalter
1998	Ralph Blake	Mark Wiser	Dave Vandermeer	Carl Hockhalter
1997	Ralph Blake	Mark Wiser	Dave Vandermeer	Carl Hockhalter
1996	Joel Rice	Janet Brockhurst	Kate Wiser	Susan Emry
1995	Joel Rice	Carl Hockhalter	Kate Wiser	Susan Emry
1994	Pat Rickey		Kate Wiser	Edie Toffer
1993	Pat Rickey		Carl Hockhalter	Edie Toffer
1992	Pat Rickey		Carl Hockhalter	
1991	Pat Rickey		Carl Hockhalter	Kate Wiser
1990	Pat Rickey	David Baird	Carl Hockhalter	Barbara Tobin

1989	Pat Rickey	-	Carl Hockhalter	Larry Tobin
1988	Pat Rickey	-	Carl Hockhalter	Larry Tobin
1987	Pat Rickey	-	Verne Smith	Larry Tobin
1986	Pat Rickey	Larry Toner	Verne Smith	Bob Kenyon
1985	Tim Downing	Larry Tobin	Verne Smith	Bob Kenyon
1984	Larry Tobin	Tim Downing	Helen Bowerman	Bob Kenyon
1983	Michael Young	Alex Bishop	Tim Williams	Bob Kenyon
1982	Bob Kenyon	Tim Williams	Helen Bowerman	Bob Hovatan
1981	Bob Kenyon	Tim Williams	Helen Bowerman	Bob Hovatan
1980	Hank Boyd	Bob Kenyon	Helen Bowerman	Helen Bowerman

## Reflection Lake Community Association Officers

Year	President	Vice President	Secretary	Treasurer
1979	Hank Boyd	Bob Kenyon	Helen Bowerman	Helen Bowerman
1978	Hank Boyd	Bernie Goble	Helen Bowerman	Helen Bowerman
1977	Pat Rickey	Bernie Goble	Helen Bowerman	Ray Dirks
1976	Pat Rickey		Ray Dirks	Ray Dirks
1975	Jon Svennungsen	Roy	Helen Bowerman	Helen Bowerman
1974	Jon Svennungsen	Pat Rickey	Helen Bowerman	Helen Bowerman
1973	Steve McGuire	Mr. Glover	Helen Bowerman	Helen Bowerman
1972	Steve McGuire	Mr. Glover	Helen Bowerman	Helen Bowerman
1971	Ken Perkins	Mr.. Stoner	Becky Buckaman	Beck Buckaman
1970	Earl A. Velin	Roger Strickland	Mary Thompson	Mary Thompson

1969	Merlyn Stoner	Larry Toner	Mary Thompson	Mary Thompson
1968	Ned Bradley		Harold Thompson	Harold Thompson
1967	Ned Bradley	M.D. Stoner	Mary Thompson	Mary Thompson
1966	Jerry Black	Bob Grey	Mary Thompson	Les Ficca
1965	Hugh Toner		Gen Toner	Gen Toner
1964	No minutes, yet			
1963	Allan W Zoesch	Hugh Toner	Mary Larson	Orvale Horton
1962	Larry Metler	Hugh Toner	Mary Larson	Mary Larson

At the first meeting in July 18, 1962 Larry Metler was elected president of the association.

*This information was collected from the Association minutes. In some cases the minutes are not unclear with regard to the correct spelling of names and when terms began and ended. If you have additions or corrections, please contact me. Jerry Parker*



*Photograph by Carl Hockhalter*



# Reflection Lake Board Members

(the first fifty years)

*The following list represents an impressive amount of volunteerism. By our count there have been 137 community members that have served on the board since the association was established in 1962. The year listed is when the board member was first elected. Information was taken from association minutes and in some cases our records are sketchy and the spelling of names is difficult to interpret. If you have corrections, please let me know. Jerry Parker*

Members that served as president are in boldface.

1. Mary Larson, 1962
2. Maurice Chamberlain, 1962
3. **Larry Metler**, 1962
4. L. Miller, 1962
5. William Anderson, 1963
6. Orvale Horton, 1963
7. Gerald Knudston, 1963
8. Merlyn Stoner, 1963
9. **Hugh Toner**, 1963
10. William Wilgus, 1963
11. **Allen Zoesch**, 1963
12. Gen Toner
13. **Jerry Black**, 1965
14. Les Ficca, 1965
15. Bob Gray, 1965
16. Mary Thompson, 1965
17. **Ned Badley**, 1966
18. Al Griffin, 1966
19. Bob McKanna, 1966
20. Mel Nordby, 1966
21. Larry Toner, 1966
22. Art Birnel, 1966
23. Bob Campbell, 1968
24. Don Ingalls, 1968
25. Earl Valen, 1968
26. Thelma Wheeler, 1968
27. Dan Bowerman, 1968
28. **Merlyn Stoner**, 1969
29. Becky Buchanan, 1970
30. Don Field, 1970
31. **Earl A. Velin**, 1970
32. Harold Ratzloff, 1970
33. Roger Strickland, 1970
34. Dennis Toner, 1970
35. **Ken Perkins**, 1971
36. Helen Bowerman, 1971
37. **Jon Svennungsen**, 1971
38. Becky Buckaman, 1971
39. Art Beauchamp, 1972
40. Mr. Glover, 1972
41. **Steve McGuire**, 1972
42. Steve Rickey, 1972
43. **Pat Rickey**, 1973
44. Wallace Anderson, 1974
45. Ray Dirkes, 1974
46. Hank Boyd, 1975
47. B. Quinton
48. Marvin Toffer, 1976
49. Bernie Gobel, 1977
50. **Hank Boyd**, 1978
51. Ernie Bleich, 1979
52. Fred Brown, 1979
53. Robert Hovaten, 1979
54. Greg Moore, 1979
55. **Robert Rosi**, 1979
56. Barbara Wilson, 1979
57. Leo Wilson, 1979
58. **Bob Kenyon**, 1980
59. Joe Spring, 1980
60. Randy Bronkhurst, 1981
61. Tim Williams, 1981
62. **Mike Young**, 1981
63. Tim Williams, 1983
64. Alex Bishop, 1983
65. Richard Moses, 1983
66. Max Newsome, 1983

67 **Larry Tolbin**, 1983  
 68 **Jim Boothby**, 1984  
 69 **Tim Downing**, 1984  
 70 Gordon Emry, 1985  
 71 Jay Lucas, 1985  
 72 Bob Ridgeway, 1985  
 73 Rod Stanton, 1985  
 74 Verne Smith, 1986  
 75 Jim Stein, 1987  
 76 David Baird, 1989  
 77 Joyce Boothby, 1989  
 78 **Carl Hockhalter**, 1989  
 79 Barbara Tobin, 1989  
 80 John Lewis, 1990  
 81 Mark Wiser, 1990  
 82 Mike Zollers, 1990  
 83 Kevin Benner, 1990  
 84 Gordon Carlton, 1991  
 85 Bill Daniels, 1991  
 86 Edie Toffer, 1991  
 87 Kate Wiser, 1991  
 88 Ken Hagenson, 1993  
 89 **Joel Rice**, 1993  
 90 Ken Wenham, 1993  
 91 Mike Williams, 1993  
 92 Charlie Fender, 1994  
 93 Jeff Bartholomew, 1995  
 94 Janet Brockhurst, 1995  
 95 Susan Emry, 1995  
 96 **Dan Loos**, 1995  
 97 **Ralph Blake**, 1996  
 98 Dave Vandermeer, 1996  
 99 Jeannie Keene, 1997  
 100 John Roman, 1998  
 101 Jerry Seen, 1998  
 102 **Larry Zoeche**, 1998  
 103 Leslie Cushman, 1999  
 104 Jona Blake, 2000  
 105 **Mike Christian**, 2000  
 106 Jerry Parker, 2000  
 107 Maggie Hansen, 2001  
 108 Glen Mumm, 2001

109 John Fechner, 2002  
 110 Sandi Hockhalter, 2002  
 111 Debbie Meyers, 2002  
 112 Phil Smith, 2002  
 113 Corrine Zimmerman, 2002  
 114 Mike Brown, 2003  
 115 **Lori Johnson**, 2003  
 116 **Matt Hansen**, 2003  
 117 Jim Joplin, 2003  
 118 Rhonda Burnham, 2004  
 119 Tim McKenzie, 2004  
 120 Joe Whelham, 2004  
 121 Dale Ronquille, 2005  
 122 Ron Rowley, 2005  
 123 Ray Schilling, 2005  
 124 Roger Meyer, 2006  
 125 Lucinda Wiser, 2006  
 126 Phyllis Ells, 2008  
 127 Linda Indiveri, 2008  
 128 Lisha Lattin, 2008  
 129 **Hugh Polensky**, 2008  
 130 Anita Smith, 2008  
 131 **Terry Zoesch**, 2008  
 132 Nan Bulish, 2009  
 133 Craig Dowdy, 2009  
 134 Jeff Lattin, 2009  
 135 Susan Weeks, 2009  
 136 Steve Hipke, 2010  
 137 Melodie Dowdy, 2011



*Board members 2010: Front row, Nan Bulish, Hugh Polensky, Craig Dowdy, Jerry Parker. Back row, Linda Indiveri, Phyllis Ells, Steve Hipke, and Terry Zoesch.*



# Reflection Lake Community Association

## Excerpts from the minutes 1962-2011



*Gordon Emry took this photograph from the northeast end of lake with his Nadine's Gloriosa Daisies in the foreground.*

Year	Excerpts from the minutes 2010-2011
2011	<ul style="list-style-type: none"> <li>• “The lake will be lowered after Labor Day. The work on the dam is scheduled to begin on September 19, 2011.” Minutes 08/02/2011</li> <li>• “Doug order \$4,000 worth of Rainbow. He is having trouble getting in touch with the man that has the brown trout.” Minutes 09/04/2011</li> <li>• “The shed at Bishop Park is almost done. Base coat is on, just needs final paint. Terry is planning on more shelving.” Minutes 09/04/2011</li> <li>• “Ron Rowley presented a contact stating that this (website) would be accomplished for \$150.00 per year. Majority ruled that the contract be accepted.” Minutes 10/06/2011</li> <li>• “We need to find two more board members.” Minutes 10/04/2011</li> </ul>
2010	<ul style="list-style-type: none"> <li>• “<u>Lake History Project</u> “There was a planning committee meeting, which created an action plan ...” Minutes 07/06/2010</li> <li>• “Golf cart storage—not in Community Center to avoid fumes and drowsy board members.” Minutes 08/03/2010</li> <li>• “Dogs not on a leash - - change sign to read, “Dogs must be on a Leash””? Sign reads, “Dogs must be in control.” Minutes 08/93/2010</li> <li>• “Ice on Sheets Road was sanded.” Minutes 02/01/2011</li> <li>• Social Committee (Steve) “There were 150-175 lbs. of canned food procured in December for Veterans.” Minutes 02/01/2011</li> <li>• “Plans for Community Center work party posted in meeting hall. Temp. Committee will do some work on lake cleanup day May 7, 2011.” Minutes 03/01/2011</li> </ul>

Reflection Lake Community Association, Elk WA

Year	Excerpts from the minutes 2005-2009
2009	<ul style="list-style-type: none"> <li>• “The success of the basketball court will bring kids together in a positive way.” 08/04/2009</li> <li>• “Bishop Park – changing bathroom into a storage facility.” 09/01/2009</li> <li>• “Tentatively, fish at a cost of \$5,450 will be planted either the last week of October or the first week of November.” 10/06/2009</li> <li>• “Carl reported that the south gate project (screen with handle) is finished.” 02/02/2010</li> <li>• “There was a lengthy discussion about the number of carp needed to maintain the balance between fish habitat and weed control.” Minutes 08/04/2009</li> <li>• “Social Committee _Lisha thanked neighbors for 400 pounds of food donated.” Minutes 02/02/2010</li> </ul>
2008	<ul style="list-style-type: none"> <li>• “The dam repair bill (removal of trickle tube) totaled more than our checking account for a total of \$19,837.80; therefore Lori Johnson moved that we cash one of our Emergency Reserve CD’s of \$10,000 to cover extra cost.” 10/07/2008</li> <li>• “Hugh reported that “No Fishing” signs were posted last week. One week ago 3,800 fish were planted. into the lake and it went well.” 11/04/2008</li> <li>• “Recently a few members have counted carp when visible; the number ranged approximately 135 to 200. Fish seen.” 05/05/2009</li> <li>• “Glen Mumm got the golf cart up and running, many thanks Glenn!” 05/05/2009</li> <li>• “Social Committee: The yard sale will take place on June 19, 20 and 21; flyers were passed out to all houses on the lake..” 06/02.2009</li> </ul>
2007	<ul style="list-style-type: none"> <li>• “Lake clean up was set for 1:00 p.m. on October 27.”10/02/2007</li> <li>• “Roads: Lori is working on fixing the pot holes. We need to deal with drainage before we finish the road.” 11/06/2007</li> <li>• “The lake is green. Maybe we can fence off some areas under water to plant...” 11/06/2007</li> <li>• “Purchase fish for 2008. Need to purchase sterile fish; non-sterile fish will not be approved. We may need to cut back on purchase of larger fish due to increase cost of sterile fish.” 02/05/2008</li> <li>• “John received all permits needed to remove trickle tube; still working on specs.” 02/05/2008</li> <li>• “New rules on fishing to be posted on all lake signs...” 03/04/2008</li> <li>• “Watson Management will send the bill to all Association members as of April 1, 2008, the charge for Watson to do the billing will be \$500.00 per year. 04/01/2008</li> </ul>
2006	<ul style="list-style-type: none"> <li>• “The lake association can use a two foot pipe in the North Dam. The first we can do the work is the week of November 1, 2006.” 09/05/2006</li> <li>• “(Volunteers) met to fix (concrete) the south overflow on Friday, November 3, 2006.” 11/07/2006</li> <li>• “The Office of Dam Safety in the Department of Ecology said that...the north drain pipe (skimmer) is defective and action is required.” 02/06/2007</li> <li>• “Carl motioned to purchase 300, 9 to 11 inch rainbow trout for about \$3,000 and approx. 500 2lbs fish for \$2,000 and Jim seconded the motion. It was passed by a majority verbal vote.” 02/06/2007</li> <li>• “Lori questioned the value of a residence pass when we have a list of all members. The only pass that is needed is the guest pass. 03/06/2007</li> <li>• “...a motion to recognize Jim Boothby as board member of the year. Carl seconded the motion and it was carried. Thank you Jim for all you have done for the Reflection Lake Community 07/03/07</li> </ul>
2005	<ul style="list-style-type: none"> <li>• “Jim Boothby reported that the cost of having Frontage Road extended was \$1,520” 9/9/05</li> <li>• “There were around 1,400 Tench collected this summer.” 09/09/2005</li> <li>• “John Fechner said that our yearly budget for purchasing fish is \$5,000. The board decided on a 50/50 mix of Brook Trout and Rainbow Trout.” 02/07/2006</li> <li>• “Dedicated lot 15 to the memory of Alex Bishop.” 06/06/06</li> <li>• “Ron Rowley set up a website for our Association, reflectionlake1.com” 06/06/06</li> <li>• “Brian Balch (attorney) will send a draft for fixing our covenants and by-laws. John Fechner and Sandi Hockhalter will review the draft and report to the board.” 03/07/2006</li> <li>• “John Fechner reported that we need notarized signatures from all legal owners for each parcel to pass this amendment.” 04/04/06</li> </ul>



## Reflection Lake, Elk WA

Year	Excerpts from the minutes 2000-2005
2004-2005	<ul style="list-style-type: none"> <li>• “Dan Loos would like to see that all board members are compensated for their time. A Motion was made and seconded that board members would receive their yearly dues for one lot only. They must attend 8 of 10 meeting for the year.” 08/03/2004</li> <li>• “Tench Derby report was given by Rhonda Burnham, and prizes were handed out. It was a fun day.” 09/7/2004</li> <li>• “A fyke net was purchased for \$600. 09/07/04</li> <li>• “New sunshade on SE access lot.” 07/09/05</li> <li>• “..\$500.00, a motion was made to purchase a golf cart.” 07/07/05</li> </ul>
2003-2004	<ul style="list-style-type: none"> <li>• “Carl Hockhalter will clean floor (Community Center) and apply epoxy to cement.” 08/05/03</li> <li>• “Dan motioned to hire Laura as our bookkeeper..” 09/2/03</li> <li>• “John reports the lake looks very green and not clean, but was told there is no budget for clean-up.” 10/07/03</li> <li>• “Covenants: All made up and mailed; 51 hand delivered, 5 still left to do. Thanks to Carl and Sandi Hockhalter and Jim Boothby.” 10/07/2003</li> <li>• “Fish: John Fechner made a motion to not spend money on fish this year, but to have it evaluated for quality of water. It was 2<sup>nd</sup> and passed.” 02/03/2004</li> <li>• Lake study: “..complete a study of the lake for \$5,200. 05/04/04</li> </ul>
2002-2003	<ul style="list-style-type: none"> <li>• “Community Center: “\$14,000 accepted by Jobs for his lot.” 09/03/02</li> <li>• “Security: Report given by Glenn Mumm. Should there be a owner pass and a guest pass? 09/06/2002</li> <li>• “Snow will be plowed at 2 ½ inches.” 11/05/02</li> <li>• “Fish: will order for \$3,000, crawdads, shrimp. Dan will call Fish n Game to make sure putting shrimp and crawdad is okay..” 02/04/03</li> <li>• “Rocks on the north dam...put on the north side of north dam..” 02/04/02</li> <li>• “Lori Johnson received a bid for new trees on median between Frontage and Elk-Milan Rd. Mt View Nursery quoted \$1,200 for 14 trees. 05/06/03</li> </ul>
2001-2002	<ul style="list-style-type: none"> <li>• “A moment of silence was recognized for the Sept. 11 tragedy.” 10/02/2001</li> <li>• “Sign committee-- Jim Boothby reported the signs are ready and there are approx. 40 hours labor to get them all set...Jim will need about \$200 worth of materials to get them put up.” 04/02/2002</li> <li>• “Fish hatchery was cleaned by work parties.” 07/20/2002</li> <li>• “..property survey completed on greenbelt, property disputes settled,” 07/07/2002</li> <li>• “...lot maintenance man, Mike Brown, was hired.” 07/07/2002</li> <li>• “By Laws: Revisions made--copies passed out...each board member must review it and bring to the next meeting with any corrections.” 04/02/2002</li> <li>• “Dead carp...We need to check out getting more...they are coming to the end of life expectancy.” 10/02/2001</li> </ul>
2000-2001	<ul style="list-style-type: none"> <li>• “The lake has ‘turned over’ and is experiencing a great deal of cloudiness, most likely due to the decaying weeds..” Reflections Newsletter August 2000</li> <li>• “Fish stocked on March 27, 4000 fish, open fishing on April. 27, 2001.” 4/4/01</li> <li>• “Sheets Road: ... was graveled. Do we need magnesium chloride?” 05/01/01</li> <li>• “NE recreation lot was reestablished and developed.” 7/7/01</li> <li>• “The Wilson Lease agreement (5 lease lots) was signed.” 7/7/01</li> <li>• Welcome baskets delivered to Steven and Lindsay Johnston, Christopher and Susan Nash, Teresa and Jeff Child, Dan and Linda Loos and Becky Myers. 10/03/2000</li> </ul>

## Reflection Lake Community Association, Elk WA

Year	Excerpts from Minutes 1995-1999
1999	<ul style="list-style-type: none"> <li>• “Dues: Carl H. sent letter to D. Burdega about 31 property owners who have yet to pay their dues, which will now include 12% interest per by-laws.” 03/02/1999</li> <li>• “Fish: Rainbows were planted March 23. Lake is closed until May 1.”04/06/1999</li> <li>• “Grass carp life cycle at an end.” 07/10/1999</li> <li>• “Proposal: Spring application (herbicide) suggested without lowering the lake.” 8/10/99</li> <li>• “Larry’s goals are as follows: 1<sup>st</sup> weed control, 2<sup>nd</sup> north dike maintenance, 3<sup>rd</sup> access lots, 4<sup>th</sup> look into county taking over Sheets Rd, 5<sup>th</sup> community togetherness - get together.” 09/07/1999</li> </ul>
1998	<ul style="list-style-type: none"> <li>• “Dan Loos unanimously re-appointed as Head Man; asked to set commodes when possible.” 04/07/1998</li> <li>• “Received tax statements for 9 parcels owned by RLCA, \$6.00 each.” 04/07/1998</li> <li>• “Meeting started to begin process on ways of settling the issue of consolidating multiple lots.” 09/01/1998</li> <li>• “Mail box installed on Sheets Rd. 4 sold, 11 left, possibility of installing another on Lakeside Drive.” 09/06/1998</li> <li>• “Wilson’s lots: Lillian Wilson and 3 others lot owners have agreed in principle to lease to RLCA in return for the yearly lot assessments...” 09/06/1998</li> </ul>
1997	<ul style="list-style-type: none"> <li>• “He (Dave Franklin) informed us that it is not necessary for nonprofit organizations like ours to file federal income tax return if our annual income is \$25,000 or less.” 01/07/1997</li> <li>• “<u>Lake Beautification Projects</u>: Things are really a mess right now because of all of the storms.” 06/03/1997</li> <li>• “The members voted to purchase three concrete tables from Conover Concrete at the approximant cost of \$550.00 each.” 09/02/1997</li> <li>• “Jim Boothby will pound re-bar or fence stakes on every other (or possibly every) corner along green belt.” 11/04/1997</li> <li>• “Lot 2 Block 1 fence encroaches onto association lot.” 11/04/1997</li> </ul>
1996	<ul style="list-style-type: none"> <li>• “Grading and Leveling Eastside Hill: We hired Frank Hartley to dredge about three feet across and three feet deep all the way down the eastside hill which will be used on the eastside beach (Bald Eagle Beach).” 01/16/1996</li> <li>• “<u>Water Rights</u>: It appears that we are covered. We have the rights to the surface water at 80 acre feet per year.” 03/19/1996</li> <li>• “<u>North Dike/Sink Hole</u>: Charlie talked to the county and got them to come out and fill the sink hole.” 04/16/1996</li> <li>• “<u>Grass carp</u>: The cost was \$4.25 per fish, which were 10-14 inches long. The fish cost \$4,250 for 1,000, plus \$3750 for shipping for a total of \$8,000.” 04/16/1996</li> <li>• “Dues are \$175 per lot.” 07/13/1996</li> <li>• “Last year the weed cover across the lake was more dense and covered a wider area across the lake.” 08/28/1996</li> </ul>
1995	<ul style="list-style-type: none"> <li>• “...overall the lake water quality is considered excellent” 07/08/1995</li> <li>• “Mark Wiser further reported on the bad news that Eurasian milfoil was located in the lake. This is considered a noxious weed...” 07/08/1995</li> <li>• “Smitty suggested crappie because they are easy to catch, good eating all summer, and they prefer warm shallow waters.” 08/15/1995</li> <li>• Carl will be working on updating the by-laws this year.” 08/15/1995</li> <li>• Mr. Haskell complained about Frances Aune’s mallard ducks given the restriction on foul.” 08/15/1995</li> <li>• “The rake was better in gathering a larger amount of weeds.” 09/19/1995</li> <li>• “The state suggested we plant 3,500 carp.” 11/21/1995</li> </ul>



## Reflection Lake Community Association, Elk WA

Year	Excerpts from Minutes 1990 -1994
1994	<ul style="list-style-type: none"> <li>• “<u>Grass carp</u>: Late April 504 grass carp were planted at 100% survival rate. Les Wagoner, will make a picture of these to be posted on the signs.” 04/27/1994</li> <li>• “<u>Snow removal</u>: Removed twice this winter.” 03/15/1994</li> <li>• “<u>Dike south</u> is now COMPLETE!!!! 05/17/1994</li> <li>• “<u>Large Garage Sale July 18, 1994</u>: Reflection Lake Community yard sale – feel free to bring you wares and set them up on your lots.” 06/1994</li> <li>• “<u>Fish</u>: 500 additional <u>grass carp</u> were planted on November 18, 1994. It appears that approximately 9 were lost. Cost including shipping was \$8.00 each. These fish thrive on Elodea.” 12/09/1994</li> </ul>
1993	<ul style="list-style-type: none"> <li>• “<u>Fish in Lake</u>: 6,000 nine inch fish planted March 31, 1992. 10” to 12” were targeted to be planted but were not available.” 04/01/1993</li> <li>• “<u>Bridge</u>: Maximum 16’ span (clear), 12’ wide, 60,000 lb load.” 06/04/1993</li> <li>• “<u>Lake security</u>: 1. Paid monthly, 2. \$250, 3. Approx. to September.” 06/04/1993</li> <li>• “Many lots have been sold. New owners are developing them and as of now only two secondary lots remain for sale on west side.” 07/04/1993</li> <li>• “<u>Frontage Road</u>: Trees need to be removed and graveled...” 07/10/1993</li> <li>• “<u>Sheets Road</u>: There was interest in paving Sheets Road. There was a lot of controversy. No decision was made.” 07/10/1993</li> </ul>
1992	<ul style="list-style-type: none"> <li>• “<u>Sheets Road</u>: To people buying and selling property, Pat filed a letter with the county that the association is responsible for maintenance. 05/12/1992</li> <li>• “On April 4, 5, 10, 19 and May 2 the dike was compacted by the work party. It passed ‘Yippee’ on May 13, 1992.” 05/20/1992</li> <li>• “<u>Water District on East Side of Lake</u>: If you are having problems with water pressure, we should be thinking about what improvements can be made and where we stand financially.” 06/09/1992</li> <li>• “<u>Fish</u>: Bought 3,000 Rainbow Trout 10”-12” long and put in the lake late July. No fishing until August 1, 1992.” 07/18/1992</li> <li>• “<u>South Dike</u>: If budget permits, work will proceed, raising dike one foot, putting chain link fence around finished work, line dike with ripple rock and finish catch basin.” 07/18/1992</li> </ul>
1991	<ul style="list-style-type: none"> <li>• “Carl Hockhalter will build an information board and install it on access lot #15 next to Bishops when weather permits.” 01/1991</li> <li>• “The board will be asking volunteers to help on a work party to remove all knapweed and trees from dike.” 01/1991</li> <li>• “Rickey reported on detail on the dike work. There are cost over runs by contractors and engineers.” 02/1991</li> <li>• “Motion was made by Dan Bowerman to raise dues to \$100.00 per lot effective July 1, 1992, seconded by Kevin Benner, motion carried.” 07/06/1991</li> <li>• “Hockhalter reported he sprayed the knapweed on the south dike.” 07/06/1991</li> </ul>
1990	<ul style="list-style-type: none"> <li>• “Approximately 40 lot owners were present.” Annual Meeting 07/07/1990</li> <li>• “Question was asked if Sheets Road could be graded, so the association agreed to look into the cost.” Annual Meeting 07/07/1990</li> <li>• “Svennungsen stated construction (spillway) permits would be needed before work begins.” 09/29/1990</li> <li>• “Helen will check with the county on the possibility of getting a bridge across the spillway.” 10/09/1990</li> <li>• “Mr. Baird and Smitty attended a conference on grass carp and found that crayfish are good for weed control.” 10/09/1990</li> </ul>

## Reflection Lake Community Association, Elk WA

Year	Excerpts from the minutes 1985-1989
1989	<ul style="list-style-type: none"> <li>• “Discounts for annual dues for 90-91 were very successful.” 07/08/1989</li> <li>• “The brass plate in memory of Ernie Bleach will be installed on the spillway.” 09/01/1989</li> <li>• “Lake will be drained August 25, 1989.” 08/01/89</li> <li>• “The work must be completed by the end of 1989 or the lake will have to be drained.” 06/08/1989</li> </ul>
1988	<ul style="list-style-type: none"> <li>• “The plan is to collect enough dues between now and fall 1989 to complete the spillway. This project will take most of the dues for about the next 5 years but will allow us to keep our lake.” Annual Meeting letter 1988</li> <li>• “Blue print plan were approved by Dept. of Ecology.” 10/04/1988</li> <li>• “Motion made and carried that Ricky will receive bids on the cost of installing the concrete spillway on the south dam. So board can make a decision on how to finance the project.” 10/04/1988</li> <li>• To raise additional money the board is offering a 33 1/3% reduction on dues paid in advance for the year 1990 and 91. In order to do this, all dues would be payable for 89, 90 and 91 by August 1, 1989.” 06/89</li> </ul>
1987	<ul style="list-style-type: none"> <li>• “Pat reported on Dam Project, intention to place outhouses and covered picnic areas on access lots.” 07/18/1987</li> <li>• “Larry Tobin and Marv Toffer reported on activity at the Fish Hatchery. Fish will be turned into the lake about the middle of September.” 07/18/1987</li> <li>• “The possibility of closing access to the church camp at the south end of the lake was discussed.” 07/18/1987</li> <li>• “It was recommended that motors be allowed on the lake to (Churn up) the weeds.” 07/18/1987</li> <li>• “Killing the small bass and dropping them into the lake will be taken care of by the turtles.” 07/18/1987</li> </ul>
1986	<ul style="list-style-type: none"> <li>• “At the present time we are under the gun and could be told that we have to drain the lake (which we do not want to happen), or we can spend more money without receiving fair value for money spent.” 07/1986</li> <li>• “At the present time the dues are \$75.00 per year and run from July 1-June 30.” 07/1986</li> <li>• “I think most people will have to agree that the lake looked very good this past summer.” 07/1986</li> <li>• “Salt and sand is going to be provided for the hill at the north end of the lake.” 07/1986</li> </ul>
1985	<ul style="list-style-type: none"> <li>• “The dues of \$75.00 per lot were due July 1<sup>st</sup> 1985. We need to raise all the money we can because of the coming spillway expenses.” Semi-Annual Report 02/1985</li> <li>• “Marv Toffer asked for more help next for the fish hatchery project.” Semi-Annual Report 02/1985</li> <li>• “We are no longer two associations. We are all one association.” Semi-Annual Report 02/1985</li> <li>• “A motion to limit total expenditures on the dam work in fiscal ’85 to \$8,000 was passed.” 08/05/85</li> <li>• “It was agreed by the board that he (Rod Staton) hire a professional test person to sample the water.” 10/22/85</li> </ul>



## Reflection Lake Community Association, Elk, WA

Year	Excerpts from the minutes and newsletters 1980-1989
1984	<ul style="list-style-type: none"> <li>• “The dues on the lake for this year have been raised to \$75.00 per lot.” Yearly Report 1984-85</li> <li>• “This year we are raising 4500 trout which will be put in when they are about 10 inches.” Yearly Report ‘84-85</li> <li>• “There are a group of people who want to put in a trailer park in our areas and they are trying to get the units of water that the lot owners are not now using to be given to them.” Yearly Report 1984-85</li> <li>• “One thing we have noticed is that there are very few Tench. The bass have eaten them.” Yearly Report 1984-85</li> <li>• “We have had a lot of complaints on excessive <u>BAD LANGUAGE</u> on the access lots. Yearly Report 1984-85</li> </ul>
1983	<ul style="list-style-type: none"> <li>• “Special thanks were given to Larry Tobin, Marv Toffer and Bob Hovatan for their hard work on reviving the hatchery. They have successfully raised fish for planting this fall.” Newsletter 1983</li> <li>• “Larry Tobin motioned to resume weed poisoning program that was successful in the past, Svenningson second. Motion passed.” Newsletter 1983</li> <li>• “Kenyon motioned to have Moses take mud samples telling of the heavy metals in Lake Bottom. Approximate cost \$150.00. Tobin second.” Newsletter 1983</li> <li>• “Dr. W.T. Barry, completed lake study. Cost: \$315.15” Minutes 10/01/83</li> </ul>
1982	<ul style="list-style-type: none"> <li>• “At this time we can confidently say that both dams are very safe and there is no reason for immediate concern that they will fail (despite what the Spokane Paper says)” Newsletter 04/01/1982</li> <li>• “There will be a work party on Saturday, April 17<sup>th</sup> at the lake. The primary activity will be work on the docks to get them in shape for the coming summer. Newsletter 04/01/1982</li> <li>• “On March 30<sup>th</sup>, 50 lbs. of weed poison was placed in the lake. On April 1<sup>st</sup> another 50 lbs. was sprayed along the shore, mostly in the weed infested areas on the East Side of the lake.” Newsletter 04/01/1982</li> <li>• “Fish are purchased with the money produced by payment of the annual dues.” Newsletter 04/01/1982</li> </ul>
1981	<ul style="list-style-type: none"> <li>• “We have had a very busy year with the repair work on the south dam.” Newsletter 1981</li> <li>• “required to hire a Geotechnical Consultant to bore test holes and do test on south dam.” Newsletter 1981</li> <li>• “The weed condition on the lake was bad this year because of the drained lake last year...” Newsletter 1981</li> <li>• “There have been a lot of people who have not paid their dues as yet.” Newsletter 1981</li> </ul>
1980	<ul style="list-style-type: none"> <li>• “Merit awards were passed out for a good job done on the dam: Ernie Bleiche, Jon Svennungsen, and Bob Hovatan. Leo Wilson, Fred Brown and Robert Rosi.” 07/19/1980</li> <li>• “motion for the acceptance for the office of treasurer.” 07/19/1980</li> <li>• “Motion by Leo Wilson to have members of the now disbanded Reflection Lake Addition Assoc., to join the Reflection Lake Community Association.” 04/01/1980 Passed unanimously</li> <li>• “Motion by Hank Boyd to give the contract of hauling the clay to the present back hoe contractor.” 04/’80</li> <li>• “Discussion on the towing job for the back hoe stuck in the mud.” 05/06/1980</li> <li>• “Olympia says to fill the lake, but to remove the brush and popular trees on the dam, but check for leaks” 7/1/80</li> </ul>

## Reflection Lake Community Association, Elk WA

Year	Excerpts from the minutes 1975-1979
1979	<ul style="list-style-type: none"> <li>• “We had a work program and started clearing the brush and trees off the south dam.” 08/23/1979</li> <li>• “That Reflection Lake Association be and hereby is dissolved as of Nov 25, 79 and that all members of the Reflection Lake Association shall join and become members of Reflection Lake Community Association with equal ownership of the lake bed and any shore bank of Reflection Lake.” 10/25/1979</li> <li>• “In 1981 the Covenants on the lake have to be renewed. One of the changes to be made in the Covenants is to make the payments of dues compulsory.” 07/1979</li> </ul>
1978	<ul style="list-style-type: none"> <li>• “The (eastside association) wants to deed the access lots to us on the Westside of the lake. They are thinking about giving us half of the lake.” 07/22/1978</li> <li>• “It was suggested that three men from each side of the lake, with the president of each association being one of these three, have a separate association to control weeds and fish of the lake.” 10/1978</li> <li>• “A special newsletter as sent out to all lot owners with a new regulation making it compulsory for every lot owner to pay their dues.” 10/1978</li> <li>• “We will get 10,000 three-inch Rainbow and 1,000 four inch Kamalooops.” 02/09/78</li> </ul>
1977	<ul style="list-style-type: none"> <li>• “It is across these lots he (Leo Wilson) has piped water and has given easements to parties on the other side of the road.” 02/25/1977</li> <li>• “The purchase would include the land on the east side of the lake, the house, the fish hatchery, the water system, the water rights and the bottom of the lake. He (Pring) is asking \$150,000 with \$10,000 down.” 04/25/1977</li> <li>• “Hadley Hackney who bought the lake, the fish hatchery and all property on the east side of the lake was at the board meeting to talk to us. He has 77 lots to sell. He has plans for having a separate association.” 09/01/1977</li> <li>• “We discussed the situation and decided we were against his idea of a second association.” 09/01/1977</li> <li>• “We will be poisoning the weeds as soon as the ice is off the lake.” 11/17/1977</li> </ul>
1976	<ul style="list-style-type: none"> <li>• “We didn’t put any fish in this year because of the possibility of poisoning fish next year.” 07/19/1976</li> <li>• “The weed killer Kornex was put in the 1<sup>st</sup> of May. We used 100 lbs.” 07/19/1976</li> <li>• “After much discussion, Carl P moved and Wally seconded a motion to rise dues to \$50.00. Twenty-two voted in favor of the dues raise.” 10/14/1976</li> <li>• “We will be checking into the matter of water rights on the other side of the lake.” 02/26/1976</li> </ul>
1975	<ul style="list-style-type: none"> <li>• “A report on a new chemical call Karmex used to kill the weed was given. There was 80 lbs used.” 07/19/75</li> <li>• “We voted to collect the dues of \$35.00 again for this year.” 07/19/1975</li> <li>• “We planted 7,500 fish this year. Mostly Rainbow and a few Kokoni Salmon and 500 – 6 inch Eastern Brook.” 07/19/1975</li> <li>• “We will be informing all new people that dig wells that if they dig a shallow well they will be doing it at their own risk if they loose their water when we lower the lake.” 07/17/1975</li> <li>• “We paid \$3,300.00 (blacktop Lakeside Dr.) \$1,500 cash and we borrowed \$1,800 to be paid back in the spring out of our lake donations.”</li> <li>• “There are 80 lots to be sold (east side). The water system has been approved by the Health Dept.” 07/17/1975</li> </ul>



## Reflection Lake Community Association, Elk WA

Year	Excerpts from the minutes 1970-1974
1974	<ul style="list-style-type: none"> <li>• “We discussed putting the trickle tube on the dike in. It will cost about \$300. The country wants to straighten out and widen the east end of the dyke and extend the culvert.” 04/28/1974</li> <li>• “We voted to charge \$35.00 for each lot owner for dues again this year.” 10/24/1974</li> <li>• “Our using of Cosoron to poison the weeds was an experiment for this year and will give us an idea how well it works so that we will be able to find out what is best in the future.” 07/1974</li> <li>• “We have put in 5,000 Rainbow fish and they seem to be doing good. We will be putting in 5,000 Eastern Brook and 1,000 Kokono Salmon this fall when the weather cools off a little.” 07/1974</li> <li>• “The Game Dept. said our lake would handle 10,000 fish a year very well.” 10/74</li> </ul>
1973	<ul style="list-style-type: none"> <li>• “It was decided that anybody who had not paid their 25 dollar lake donation did not have any right to holler or complain about condition of the lake.” 07/1973”</li> <li>• “It was decided to poison the scrap fish in October.” 07/1973</li> <li>• “..we have turned the roads over to the county.” 07/1973</li> <li>• “We made a profit of \$35.47 on the Turkey Shoot.” 07/1973</li> <li>• “There have been complaints about motor bike speeds on the road.” 09/27/1973</li> <li>• “We will lower the lake as soon as the ice melts.” 10/25/1973</li> <li>• “The Health inspectors will be out in the spring to condemn all outhouses not up to code.” 10/25/1973</li> </ul>
1972	<ul style="list-style-type: none"> <li>• “We should see about total blockage of the road on the dike to keep cars off.” 2/72</li> <li>• “There are 2 new people that have moved on to the lake. Mr. Jon Svennungsen and Mr. Rickey.” 02/22/1970</li> <li>• “The road (Lakeside Dr.) has been oiled and paid for.” 06/22/1972</li> <li>• “There was talk about Pring releasing the road to the county and the lake to the people in the future.” 08/24/1972</li> <li>• “Motion by Earl Velin to establish Lakeside Drive.” 10/27/1972</li> <li>• “As soon as the county is finished fixing the road we are to have mail delivery on the lake.” 12/01/1972</li> </ul>
1971	<ul style="list-style-type: none"> <li>• “Stoner announced that Pring promised to try to take care of the weeds.” 10/25/71</li> <li>• “The announcement was made that Chet Sheets passed away.” 10/25/1971</li> <li>• “It was brought up to try and turn the road over to the county.” Early will go and talk to them with the petition he accepted.” 10/25/1971</li> <li>• “It was discussed to see about getting a court order to drain the lake.” 01/21/1971</li> </ul>
1970	<ul style="list-style-type: none"> <li>• “He (Chet Sheets) estimates he has 8,000 to 10,000 fish to plant on Sunday.” 2/26/1970</li> <li>• “Mrs. Wheeler reported that she has learned that the total assessed valuation of the lake property is \$61,820 on the west side, and \$7,580 on the east side.” 03/1/1970</li> <li>• “It has been estimated that 2,000 gallons of water per minute flow into the lake.” 03/19/1970</li> <li>• “The road (Lakeside Drive) will be oiled on Monday by Payne’s Midget Oiled Company, using approximately 2,000 gallons of oil at 10 cents/gal.” 06/25/1970</li> <li>• “..authorized to spend up to \$275.00 for an aluminum boat 12 or 14 ft.” 06/25/70</li> <li>• “Mr. Velin briefly discussed the road maintenance assessment, which has been about 65% paid this year.” 10/29/1970</li> <li>• “Don reported he did place litter barrels on the dike, but they disappeared within a few days.” 06/25/1970</li> </ul>

## Reflection Lake Association, Elk WA

Year	Excerpts from Minutes 1965-1969
<b>1969</b>	<ul style="list-style-type: none"> <li>• “Larry reported it cost him \$590 to fill the hole in the dike, using 285 yards of fill dirt around the dike and hiring help.” 04/03/1969</li> <li>• “Larry reported that Jerry Moran, whose irrigation pump was flooded when the dike went out, told him that the insurance company will not pay...” 05/17/1969</li> <li>• On the subject of oil for the road, Don said he would check with the paper company about their waste chemicals.” 05/17/1969</li> <li>• “He (Larry Toner) replied he would keep the road open during the winter for \$500.” 10/30/1969</li> </ul>
<b>1968</b>	<ul style="list-style-type: none"> <li>• “A bulldozer with cable is available for pulling stumps at \$10 per hour.” 01/1968</li> <li>• “On February 28, the County Planning Commission voted to rezone Reflection Lake Addition to Agricultural Suburban. This means simply that trailers used as residences may remain, but no more trailers may be moved in. 03/1968</li> <li>• “The \$10 per lot assessment unanimously approved last October has been received from 42 lots.” 03/1968</li> <li>• “The treasurer was authorized to purchase a fifth of whiskey for Jerry Gaffney for his help with the culverts.” 05/26/1968</li> <li>• “...(Coldsnow vs. Reflection Lake Inc.) Dated May 23, 1968. Coldsnow was awarded \$25 damages for land flooded; \$98 damages to bridges...” 05/26/1968</li> <li>• “Fish planted this year – 16,908 valued at \$2,589.47.” 10/23/1968</li> </ul>
<b>1967</b>	<ul style="list-style-type: none"> <li>• “Length of time to serve as trustee was determined by drawing numbers from Mr. Stoner’s hat. 02/24/1967</li> <li>• “Mr. Griffin reported on the weed cutter we have, which consists of a 50’ chain to be used with one man on shore and one in a boat.” 03/23/1967</li> <li>• “There have been incidents of vandalism reported at the lake.” 05/25/1967</li> <li>• “The vote on the purchase of a mechanical weed cutter was 57 to 5 in favor.” 7/67</li> <li>• “Larry Toner said it would take 8-10 loads of gravel to fill the chuck-holes at a cost of \$10.00 per load. 06/24/1967</li> </ul>
<b>1966</b>	<ul style="list-style-type: none"> <li>• “The weed problem: possible solution is to drag lake.” 01/20/1966</li> <li>• “A get-acquainted party will be held on Feb. 12 at the Inland Power and Light Auditorium. Expenses will be partially covered by the Association.” 01/20/66</li> <li>• “A new division is planned on the eastside of lake to be made into 40 lots with a water system put in by Washington Water Power.” 01/20/1966</li> <li>• “Mr. Pring states he has 78 lots outlined for sale as soon as possible. He says this will give the association almost \$24,000. (Question: How can buyers of these lots be members of our association?)” 3/07/1966</li> <li>• “It was considered a good idea to deputize Les, Chet and Walt Graupman.” 06/66</li> <li>• “There was a discussion of the advantages and disadvantages of incorporation. In order to incorporate, every owner must agree in writing. 07/21/1966</li> </ul>
<b>1965</b>	<ul style="list-style-type: none"> <li>• “The Reflection Lake Association meeting was called to order at 7:30 at Appleway Motors by President Hugh Toner.” 11/13/1965</li> <li>• “We had a message from Chet Sheets that lot owners refrain from cleaning fish in the lake.” 11/13/1965</li> <li>• “A book of rules will be temporarily drawn up, brought to the next meeting, discussed openly and prepared for printing.” 11/13/1965</li> <li>• “Mr. Birnel asked if possible to drain the lake a few feet to enable landowners to clean their beach? Mr. Harrington says draining of the lake is very treacherous.” 11/13/1965</li> <li>• “Mr. Harrington said Reflection Lake Inc. arranged for keeping the road open during the winter.” 11/13/1965</li> </ul>



## Reflection Lake Association, Elk WA

Year	Excerpts from Minutes 1962-1964
1964	<ul style="list-style-type: none"> <li>• No minutes found, yet.</li> </ul>
1963	<ul style="list-style-type: none"> <li>• “A motion was made and seconded that the Association was <u>not</u> in favor of putting the road though and on up the hill (Bald Eagle Beach). A unanimous ballot was cast.” 05/09/1963</li> <li>• “Who owns and operates the land on the eastside of the lake?” 05/09/1963</li> <li>• “What is going to be done about the weeds? Are any going to be killed or taken out?” 05/09/1963</li> <li>• “A motion was made and seconded for the purpose of constituting a legal quorum or majority, at least one third (33 1/3%) of the lot owners must be present at all meeting, with one vote per lot.” 05/09/1963</li> <li>• “Is the road (Lakeside Drive) going to be repaired or finer gravel used to finish it?” 05/09/1963</li> </ul>
1962	<ul style="list-style-type: none"> <li>• “So that we would have a report of the meeting nominations were opened for the office of secretary. Mary L. Larson was nominated and elected (secretary).” 07/18/1962</li> <li>• “The first problem discussed was that of the weeds in front of the fish hatchery” 07/18/1962</li> <li>• “In reply to a question ‘what do we feed the fish?’ Chet Sheets said he feeds them 75 lbs. of ground Tench daily.” 07/18/1962</li> <li>• “Mr. Larry Metler will mimeograph a list of property owners...” 08/15/1962</li> <li>• “...the north dike to be widened and beefed up and the middle dike removed.” 07/31/1962</li> <li>• “Chet suggested that friends who are visiting, give one long and one short toot on their horn, so that he will know they are authorized.” 08/15/1962</li> </ul>



*North dam trickle tube, 2003.*

## RLCA Lot Dues Assessment

1967. “Al Griffin moved to assess ourselves **\$10 per lot** to cover the cost of draining and poisoning and to help restock the lake. Motion was carried unanimously.” Minutes 10/25/1967

“We will set a date of April 1<sup>st</sup> for **\$25.00 assessment** for the lake upkeep and fish.” Minutes 12/01/1972

“We voted to charge **\$35.00 for each lot owner** for dues again this year.” Minutes 10/24/1974

“After much discussion Carl P. Moved and Wally seconded a motion to raise dues to \$50. Twenty-two voted in favor of the dues raise.” Minutes 10/24/1977

“The dues on the lake for this year have been raised to **\$75.00 per lot.**” Minutes from Yearly Report 1984-85

“To raise additional money the board is offering a 33 1/3% reduction on the dues paid in advance for the year 1990 and '91 by August 1, 1989. The break down is as follow per lot:

July 1, 1989	\$75.00	Due July 1, 1989 (paid at Annual Meeting)
1990	\$50.00	Due August 1, 1989
1991	\$50.00	Due August 1, 1989”

Carl Hockhalter, Secretary July 8, 1989

“MEMBERS we want to thank all of you for your GREAT support by paying dues in advance. Approximately \$20,000 was raised so thanks to you we can complete the 1<sup>st</sup> phase of the dam work.” Minutes 06/1990

“Motion was made by Dan Bowerman to raise dues o **\$100.00 per lot** effective July 1, 1992. Second by Kevin Benner, motion carried.” Minutes 07/06/1991

“All association dues for the year 1996-97 are due on July 1, 1996. Dues are **\$175 per lot.**” Annual membership meeting and dues notice 07/13//1996



The RLCA lot dues have not increased since 1996. The board of directors works hard to manage the lake within our current income.



**Reflection Lake Management**  
(Actions and comments from the RLCA Minutes)

<b>Year</b>	<b>Fish</b>	<b>Aquatic plants (weeds)</b>	<b>Lake condition</b>
1962		Problem of weeds in front of fish hatchery	
1963		What is going to be done about the weeds?	
1965	Chet Sheets ask lot owners not to cleaning fish in lake		
1966		Weed problem: possible solution is to drain the lake	
1967		The vote on the purchase of a mechanical weed cutter was 57 to 5 in favor.	
1968	Fish planted this year – 16,908 valued at \$2,580		
1970			It has been estimated that 2,000 gallons of water per minute flow into the lake
1971		Stoner announced that Pring promised to try to take care of the weeds	It was discussed to see about getting a court order to drain the lake.
1973	It was decided to poison the scrap fish in October.		We will lower the lake as soon as the ice melts.
1974	5,000 rainbow, 5,000 Easter Brook and 1,000 Kokanee Salmon	Casoron to poison the weed was an experiment for this year	Fish and Game says our lake can handle 10,000 fish per year.
1975	7,500 fish this year; mostly Rainbow and few Kokanee and Eastern Brook trout.	80 pounds of Karmex used to kill weeds	
1976	No fish planted this year	100 lbs. Karmex to kill weeds.	
1977		We will be poisoning the weeds as soon as the ice melts.	
1978	10,000 three-inch Rainbow and 1,000 four-in. Kamloops		
1980			Olympia says to fill the lake, but remove brush and popular trees on the dam
1981		The weed condition on the lake was bad this year because of the drained lake last year.	
1982	Fish are purchased with funds from the annual dues.	100 lbs. of weed poison was placed in the lake	
1983		Motion to resume weed poisoning.	Lake Assessment Study. Also, testing mud in the lake for heavy metals.
1984	Bass are eating tench. Hatchery is raising 4,500 Trout; release at 10 inches.		
1985	Request for more help for The fish hatchery project.		Professional test person to sample water
1986			The lake looks very green this past summer

**Reflection Lake Management**  
(Actions and comments from the RLCA Minutes)

<b>Year</b>	<b>Fish</b>	<b>Aquatic plants (weeds)</b>	<b>Lake conditions</b>
1987	Hatchery release will be in September. Killing small Bass will be taken care by turtles.		
1989			Lake will be drained for dam maintenance.
1990	Two members attended Grass Carp Conference and found that crayfish are good for weed control		
1992	3,000 Rainbow put in lake in late July		
1993	6,000 nine inch fish planted March 31.		Lake security started
1994	1,000 grass carp planted. They thrive on Elodea		
1995	State suggested 3,500 grass carp in our lake. Planted 5,200 9' fish for \$3,000.	The rake was better in gathering larger amounts of weeds	Lake water considered excellent quality due to spring water source.
1996	1,000 additional carp added to the lake.	Last year the weed cover across the lake was greater than before.	
1999	Rainbow trout planted	Spring application of herbicide (Sonar) without lowering lake. Dave Lamb	Weed control is number one goal.
2000	4,000 fish stocked in March	2 <sup>nd</sup> application of Sonar.	Lake "turned over" and is very cloudy likely due to decaying weeds.
2001	Some dead carp, we may need to get more.		Fish hatchery was cleaned
2002	\$3,000 for fish, crawdads and shrimp.		
2003	No fish planted this year.		Lake looks green and not very clean. Second lake study.
2004	Tench Derby held and fyke net purchased to catch tench		
2005	\$5,000 for fish; both Rainbow and Brook Trout. 1,400 tench were removed.		
2006	\$5,000 spent on Rainbow, both large and medium size.		
2007	\$5,000 spent on Rainbow	We need more aquatic plants.	The lake is green
2008	3,800 triploid Rainbow Trout planted in Fall. (\$5,000)	Study area in lake was screen off from grass carp.	
2009	\$5,450 for Rainbow in the Fall planting	Rapid plant growth in study area.	Lake is clear of weeds
2010	\$3,500 for Rainbow and \$1,500 for Brown Trout to help reduce perch population		Appearance of lake is good
2011	\$4,000 worth of Rainbow. Will order additional Browns.	Study site screen removed.	The lake looks great, but it was a late spring.



## Reflection Lake Water Quality “It’s a balancing act.”

Reflection Lake’s most consuming problem has been too many weeds growing in the lake and the search for a balance. From the earliest days in the 1960’s the Board Members and residents of the lake have debated and tried many solutions. A variety of herbicides were applied to thriving plant populations, the bottom of the lake was dug with chains to break loose the plants, the lake was drained in the winter to freeze out the plants, and they mechanically removed using motorboats with rakes on the front and the water soaked plants were muscled ashore with pitchforks. By the early 1990s, after more than thirty years of effort, the results were that the lake was still choked with waterweeds and they seemed to be getting worse.

In 1993 the board set out to deal with the invasive waterweeds. To combat the problem funds were budgeted to purchase boats and motors, and training was planned to remove the weeds. A permit was filed to import experimental grass carp to help eat the infestation of weeds. In the spring of 1994, 500 carp were put into the lake and in the fall 500 grass carp were added and all had survived the trip from Arkansas. In 1995 lake water was sampled by Mark Wiser and analyzed by Triple A Labs. It was found that we have “drinking water” quality lake water. The Fish and Game recommended that the lake maintain 25% weeds cover and that it may require 3,500 grass carp and at least five years to reduce the amount of vegetation. In 1996, one thousand additional grass carp were planted for a total of 2,000 grass carp in Reflection Lake.

*“Mark reported that we had gotten our permit for 1,000 additional carp. There is a new person at Fish and Wildlife who is fairly knowledgeable about carp and he supports our program. The state has been doing research and now believes that their recommendations are off. They were suggesting 3,500 fish for our lake, but lakes that have planted at the full-recommended level are now being eaten out. This leads to a lot of problems, including algae blooms, decreased water quality and turbidity. They are now recommending we maintain our current level, plus 1,000 additional fish. Any planting for the foreseeable future should be to replace lost fish only.”* Minutes March 19, 1996:

*“Mark explained that turbidity is the term that refers to clarity of the water. It describes the relationship between the amount of weeds and the clarity of the lake. If there are a lot of weeds, the water tends to be clear. As we start removing weeds, the nutrients in the water (fertilizers, animal droppings, yard/lawn debris, decaying plant material) increase and are taken up by algae. It is a balancing act. Last year we had more weeds, so we have better clarity. This year there are less weeds and less clarity. It appears, however, that the carp are doing their job.”* Minutes July 1, 1997

In 1999 the lake was treated with an herbicide called Sonar, which kills the entire plant for up to five years. A professional applied Sonar, which circulated through the lake. There was concern that the first treatment was not adequate and a second

application was carried out. Some felt the poisoning went too far and killed all of the vegetation on the lake bottom, which resulted in a great deal of decomposing vegetation. Many felt that finally the lake is weed free and much safer for recreation and looked better.

With the effectiveness of Sonar, it had become apparent that we now had too many carp and practically no vegetation. In 2004 archery, snagging and spearing of carp was encouraged and some of the wary grass carp were killed. Our carp have lived more than double their expected life span. In 2009 one was measured at 38 inches and 28 pounds, and there are reports of even larger grass carp. In 2010 estimates of our remaining sterile grass carp population are variable and range between 100 and 500.

*“Tench, it is agreed, are a more significant long-term problem. They are prolific reproducers and have taken over lakes managed by the State. We sponsored a Tench derby in August. The community spirit was great; unfortunately we didn’t put much of a dent in the fish population. One approach used by WDFW is a capture net. They have a lot of experience, especially in Western Washington with this method. We have purchased a Fyke net and will be placing it in the lake in the near future.”* John Fechner, Notice from RLCA Board, Oct. 2004

By June 2005 over 1,100 tench had been removed from the lake. At the 2005 annual meeting John recommended that we find a way to add more plants to the lake. In 2009 the conservation committee built a pen of several thousand square feet in the northeast end of the lake and introduced some aquatic plants. They quickly found that they did not need to transplant vegetation because without the grazing grass carp, the area was colonized and became choking with pondweeds. The study area clearly demonstrated that without the grass carp our lake is still perfect for plant growth. Some voiced concern that once this plant colony became establish that it might take over the entire lake. A twenty-foot section of fence was removed and within days the carp moved into the study area. It appeared the grass carp first grazed on preferred species, but after less than a month the study areas was completely eaten out by the grass carp.

We should send gratitude to the community volunteers of Reflection Lake who continue to debate and attempt to balance the variables.



*This is one of the many springs that feeds the lake (2011)*



## Reflection Lake Community Center (2002)

37708 N. Sheets Road

Elk, WA 99009



*Picture taken during the winter of 2006*



*Picture taken December 2008*

“\$14,000 accepted by Jobs for his lot and 24’ by 28’ building. Jim Boothby was concerned about on-going cost in connection with purchase. He guessed to improve it would be well within our budget of \$20,000. Moved and seconded to proceed to purchase of lot. Passed in favor” *Minutes 10/03/2002*

“Carl Hockhalter is head of the building committee for the new center.” *Minutes 11/05/2002*

“Community Center: Power pole has been installed. Advanced Electric made a bid for installing electricity to center for \$1,685 and a permit for \$115. This was the only bid. The board motioned to move forward.” *Minutes 06/03/2003*

This modest pole building has been brought up to a usable standard by the work and planning of Carl Hockhalter. Carl is a master of reusing materials, finding donations and getting things done without spending a lot of money.

### Some places the association has met:

1962 Main Realty office  
1965 Appleway Motors  
1966 Home of Bob Grays  
1966 Access Lot 43  
1967 Home of Ned Bradley  
1968 Home of Larry Toner  
1970 Riverside Center  
1973 Hillyard W.W.P. Hall  
1978 Ziegler’s Hall  
1987 Access Lot 15  
1991 Cowboy Bob’s on Hwy 2  
1993 Home of Carl Hockhalter  
1995 Elk, VFW  
2000 Church meeting room  
2004 Reflection Lake Community Center

We now have a “home” to meet and organize our records.



This is Lake Clean Up Day lunch, May 7, 2011. Note the freshly painted green trim and new pictures.

## Description of Dam sites

The Reflection Lake lies in a glacial valley that parallels the Little Spokane River valley and is drained by Sheets Creek. The owner, Chet Sheets, built the dams in 1955. In the 1960's the dams were turned over to the Reflection Lake Community Association. The normal elevation of the lake is 1839.8 feet. This water level is maintained year round primarily by springs that are fed by groundwater from the terraces to the east of the community.

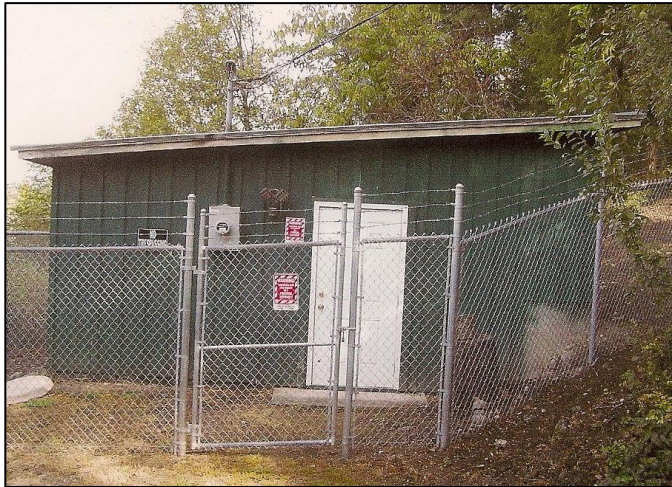
Information	North Dam	South Dam
State Identification	SP55-0362	SP55-0050
Year Completed	1955	1955
Dam Height	8'	23'
Dam Crest	200'	710'
Surface Area	58 acres	58 acres
Drainage Area	0.58 sq. miles	0.58 sq. miles
Spillway Max. Discharge	13 Cfs	11 Cfs



*Photograph by Carl Hockhalter*



## Reflection Lake Water Association



*Pump house located on south Sheets Road*

Leo Wilson gave a report about the lots on the east side of the lake. There are 80 lots to be sold. (There are 92 lots on the east side.) The water system has been approved by the Health Department. *RLCA Minutes 07/17/1975*

Leo Wilson stated that he has a contract with Pring and Harrington for the use of one household worth of water (one ¾" pipe) for each of his five lots (lots 8, 9, 10, 11, 12). *RLCA Annual Meeting Minutes 09/14/1976*

It is across these 5 lots he (Leo Wilson) has piped water and given easement to the parties on the other side of the road." *RLCA Minutes 02/25/1977*



*Expansion Tanks (bladder tanks)*

The Ecology Dept. says a new law was passed in 1983 that says if you don't continuously use it on a regular basis you will lose it. There is a group of people who want to put in a trailer park in our area and they are trying to get the units of water that the our owners are not now using to be given to them. *RLCA Minutes, Yearly Report 1984-1985*

The Water District on East Side of Lake is having problems with water pressure; we should be thinking about what improvements can be made and where we stand financially. *RLCA Minutes 06/06/1992*



*Main water line to system, expansion tank connecting lines, water pumps.*

Mike Zollers – President of Water System, Mike Williams and Ken Hagenson reported:

1. Installed in approximately 1956.
2. System is under sized for number of lots it is to serve.
3. Needs updating and could cost approximately 40 cent lin. Ft.
4. State funding:

In order to received state funding, grants, etc. you must form a water district.

*RLCA Minutes 09/09/1993*

*Photographs by Susan Weeks, 2011*



## Reflection Lake Water Association



*Interior south wall of pump house: chlorination tank, panels, and cistern tank.*



*Newly installed meter, ready for back fill.*



Front: Susan Weeks (President), Debbie Jimenez (Secretary), Brook Welsh (Treasurer) Back: Neil Kimbell, Pat Shay, Craig Dowdy (VP), Doug Householder, Jan. 2012

*Photographs by Susan Weeks, 2011*

Mike Zollar reviewed the history of the water system on the east side of the lake. Currently:

1. 20 homes are on the system
2. System has 500 gallon per minute.
3. Holding tank is 2,500 gallons.
4. Tank installed in the mid 60s.
5. 500 gallons could serve approximately 500 homes.
6. System has cast iron lines and brass valves, which work perfectly.
7. Monthly testing is done by certified labs and has always passed.
8. By 1995 EPA may require a chlorinator be install in the system.

*RLCA Minutes 11/09/1993*

Wilson Property: ...Five leases (four owners) were enclosed--one for each lot. Dave Burdega (attorney) has the originals and we have copies. RLCA Minutes 10/03/2000. The Association felt it was necessary to lease the lots above the spring to ensure pristine water. If they were ever developed it could cause a problem with water quality.

Leo Wilson put in the water system in 1966. It was a 2" line and it was adequate before all the new houses. Water Association put in a line for frontage road later. When they pulled up the line in 1986 it was still almost as good as new  
*Gordon Emry interview July 16, 2010*

The Washington State Department of Health requires that the Reflection Lake Water Association must have meters connected by 2016. In 2009 four were installed, 2010 seven were installed and in 2011 eleven were installed. Currently we have completed 22 of the 53 meters.  
*RLWA President, Susan Weeks, 2011*



## Aerial Photograph of the lake



This is an aerial photograph of the lake taken about 2002, when the lake was drawn down to work on the south dike outlet. It shows the topography of the lake bottom, and makes it easier to understand what is happening in the lake. *Photograph provided by David Vander Meer*



## Foot Valve



Carl Hockhalter opening and testing the south dam foot valve.



Foot valve is often opened in the fall to lower the lake for maintenance.

*Photos by Jerry Parker*





*Michael Garrison, Melodie Dowdy's brother, took this photo in June 2009 from the dock at Bald Eagle Beach.*

*“Perhaps the truth depends on a walk around the lake.”  
~Wallace Stevens~*

# About the Author

February 16, 2012

Reflection Lake, Elk, Washington

## Jerry Parker

Jerry Parker imagined the idea of a Reflection Lake History Book when he was going through the minutes two years ago. He noticed that the Reflection Lake Association would be fifty years old and said "Wouldn't it be great if we could really celebrate that. It would help bring the community together and build a sense of history". He had noted the collective amnesia we seem to have on the lake. As he was researching the book there were several things that kept him going. One was the history committee, the other were the lessons learned. Sometimes it feels as if we are still working on the same problems, but when you look back over fifty years we have accomplished so much. Our neighbors, who donated thousands of hours and countless resources, to make our community better, made these accomplishments.



### His life



Jerry was born near Palermo, California in May of 1940. He moved to Silver Strand State Park in Junior High when his father became the Park Ranger. He received his Bachelors degree in Biology and Education from San Diego State University and moved to Arcata California with his wife and family where he was and educator for eighteen years. He received his Masters in Biology and another Masters in Administration during these years. He then ventured out and taught overseas for the next thirteen years. Lucinda and Jerry met in Damascus, Syria and married the following year. They bought their property in the summer of 1993. Jerry first built the summer cabin, then built the house over the next ten years. He was able to do this work during the summers while home from their overseas posts. He has lived in the Middle East, the Sub Continent, South America, and Central America. He retired in 2000 and began his service to the Reflection Lake Community Association.

### His Service



Jerry first was elected to serve on the Reflection Lake Association Board 2000 as an alternate. He has served as Treasurer for the last several years and worked on the Dam Safety Committee and Budget Committee. Jerry has written the Newsletters for the last six years. He was the recipient of the first annual Community Service Award in 2010.



### Favorite quote:

*You must be the change  
you wish to see in the  
world. Ghandi*